

Extent of Proposed Development within view

Views of Fields 3, 4, 5 & 6



Viewpoint 3: PRow South of Wood Lane



OS Reference: E452991 N328899
Eye Level: 90.5m
Direction of View: 305°
Distance to Site: 0.01km

Horizontal Field of View: 90 Degrees
Vertical Field of View: 18.7 Degrees
Paper Size (A3): 420x270mm

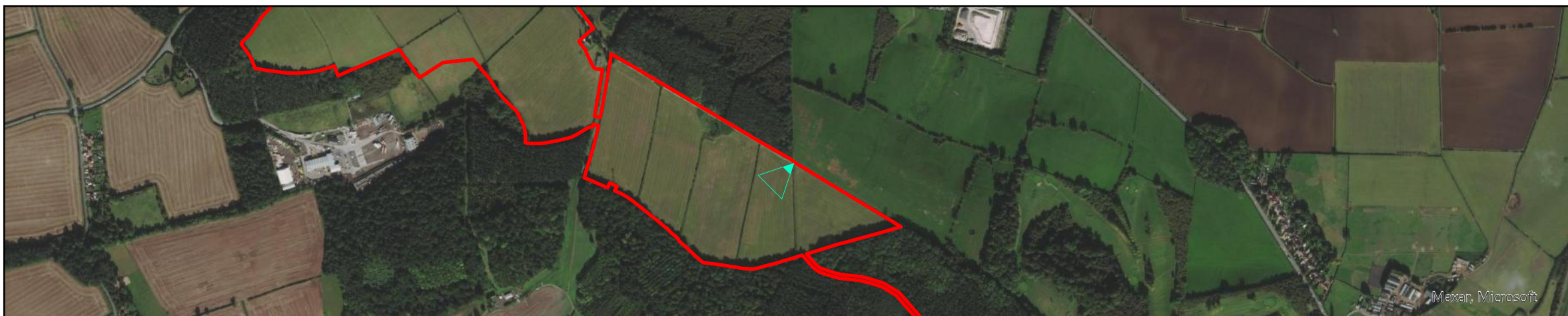
Camera: Canon 6D
Lens: 50mm
Camera Height: 1.5m AGL
View flat at comfortable arm's length

Extent of Development within View

Partial Views of fields 1,2,7,8,9 with direct views into fields 10 & 11



Viewpoint 4: PRow Wood Lane at the corner of BW10 & BW11



OS Reference: E453465 N328728
Eye Level: 92.5m
Direction of View: 281°
Distance to Site: 0.01km

Horizontal Field of View: 90 Degrees
Vertical Field of View: 18.7 Degrees
Paper Size (A3): 420x270mm

Camera: Canon 6D
Lens: 50mm
Camera Height: 1.5m AGL
View flat at comfortable arm's length