



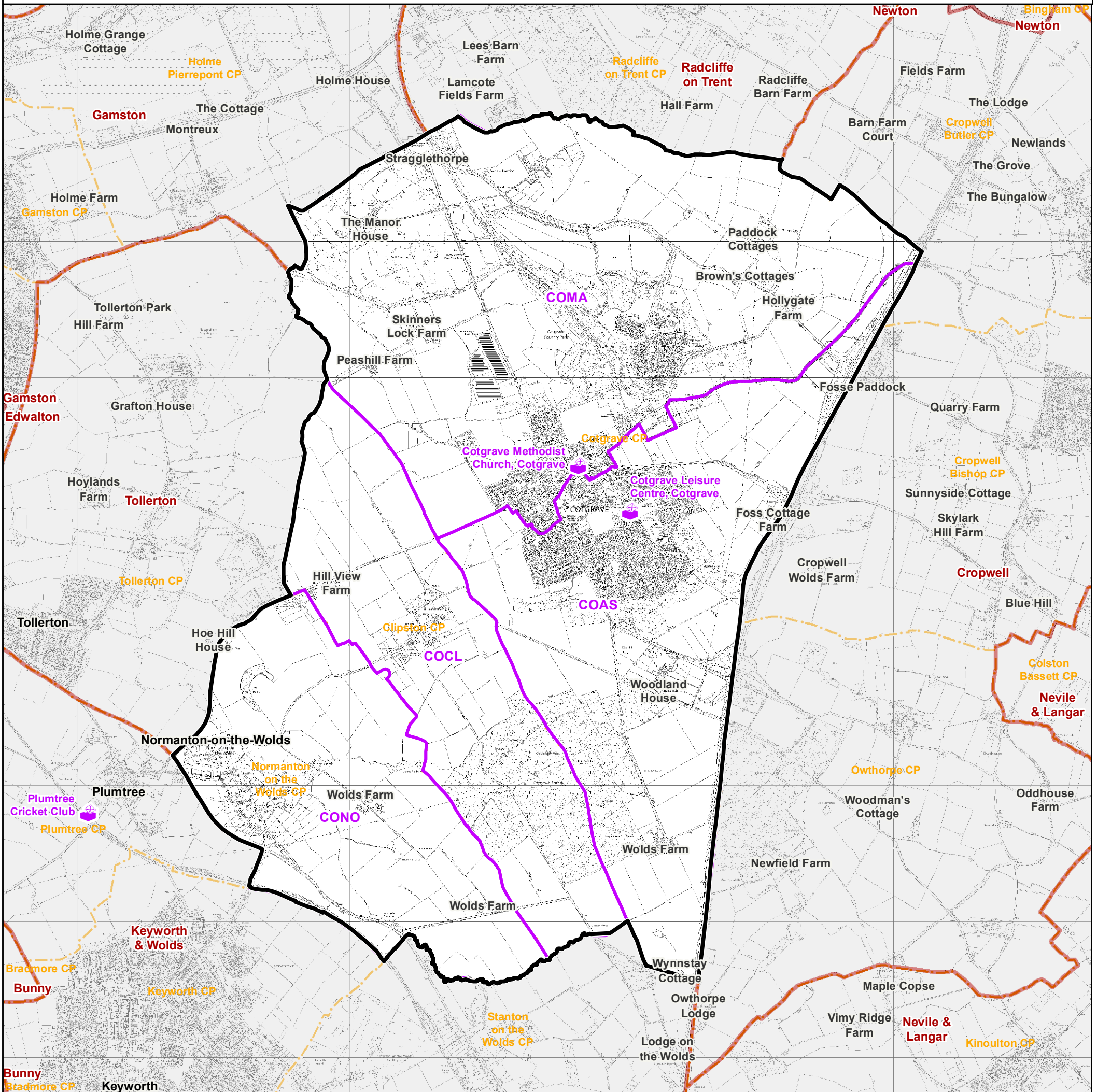
21 December 2022

Rushcliffe Borough Council - Cotgrave Ward

Proposed Polling Districts and Places - Map No. 6

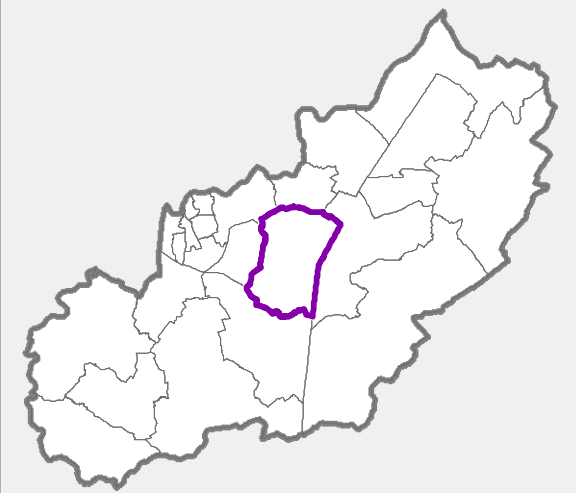


Rushcliffe
Borough Council



Polling Places: **COTGRAVE**

- COAS | Cotgrave Leisure Centre, Cotgrave
- CONO | Plumtree Cricket Club
- COMA, COCL | Cotgrave Methodist Church, Cotgrave



Not To Scale