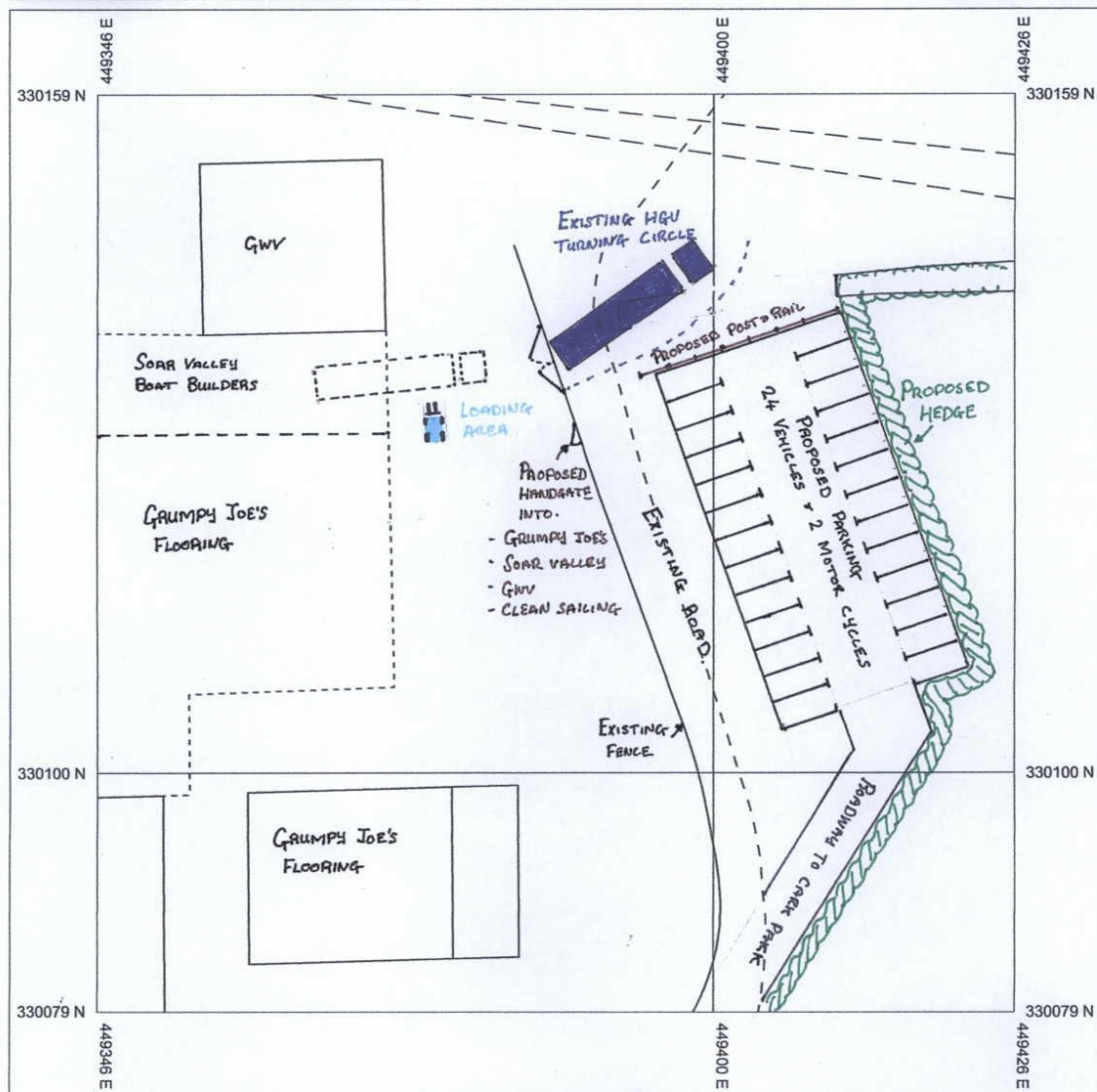


Appendix B – Plans and Documents from Planning Application 12/00300/LBC which sought Retrospective Planning Permission for a car park located immediately west of the appeal site in February of 2012.

Mapping
sourced from

Location Map

PROPOSED RETENTION OF CAR PARK
SERVING

- GRUMPY JOE'S FLOORING
- SOAR VALLEY BOAT BUILDERS
- GWV
- CLEAN SAILING



Scale 1:500

Produced 15/03/2012 from the Ordnance Survey National Geographic Database and incorporating surveyed revision available at this date. © Crown Copyright 2012

Reproduction in whole or in part is prohibited without the prior permission of Ordnance Survey

Ordnance Survey and the OS Symbol are registered trademarks of Ordnance Survey, the national mapping agency of Great Britain.

The representation of a road, track or path is no evidence of a right of way.

The representation of features as lines is no evidence of a property boundary.

Supplied By: LMS John E Wright

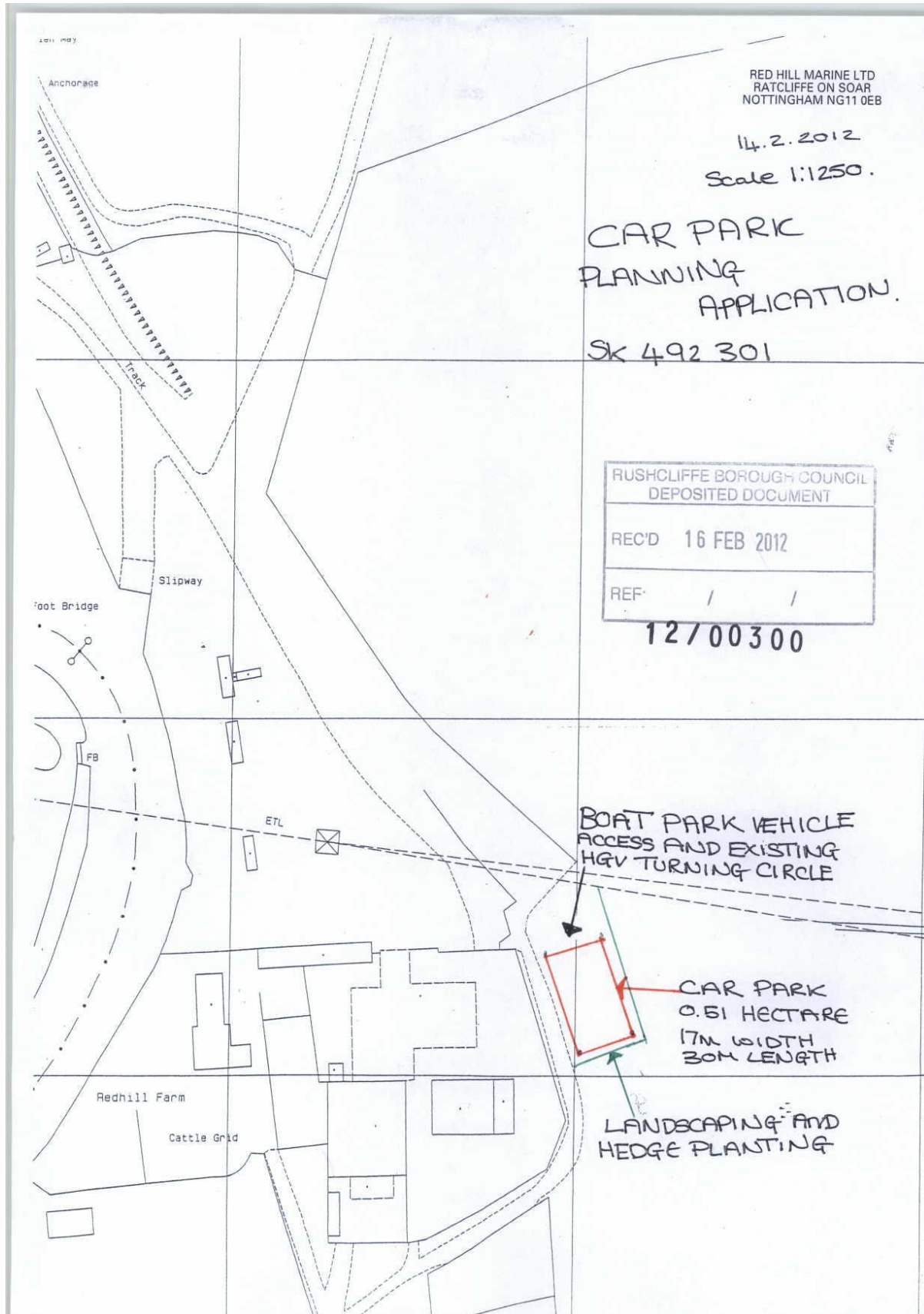
Serial number: 001031358

Plot Centre Coordinates: 449386, 330119

REF.

RECD - 3 MAY 2012

USHOLIFFE BOROUGH COUNCIL
DEPOSITED DOCUMENT





2012 Plan from previous page overlain on 2025 aerial photography to show the position of the 2012 retrospective car park proposal to the west of the hedge which divides it from the appeal site.