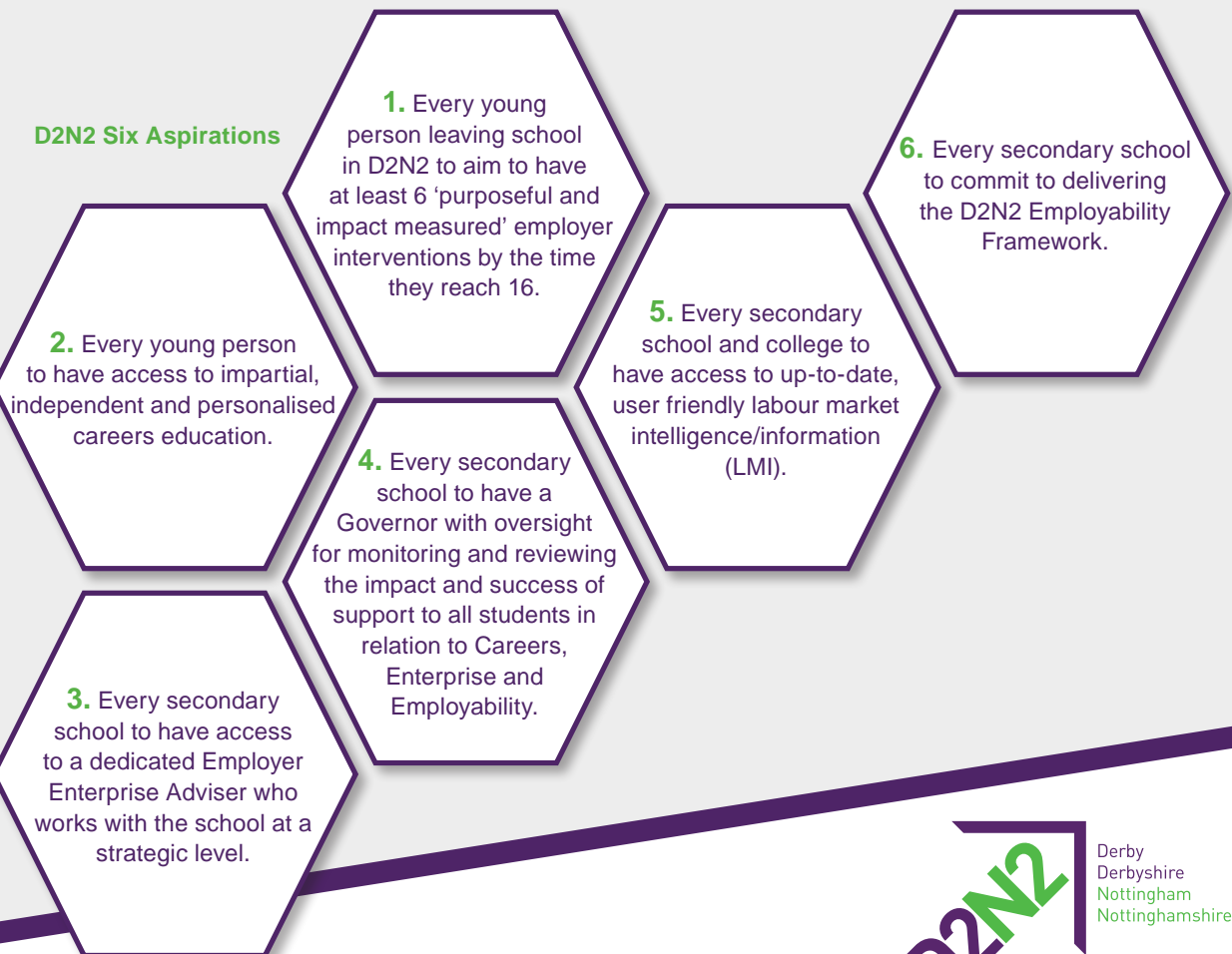


Careers, Enterprise and Employability

a partnership between education, employers,
and careers professionals
(April 2018)

Our Vision for Young People

D2N2 Six Aspirations



THE CAREERS &
ENTERPRISE
COMPANY

D2N2
Derby
Derbyshire
Nottingham
Nottinghamshire
Enterprise Adviser
Network

The D2N2 Enterprise Adviser Network

The activity of the Network is providing support to inspire and prepare young people for the fast-changing world of work - raising aspiration, creating opportunities, and encouraging good quality careers and enterprise activities through purposeful employer interventions.

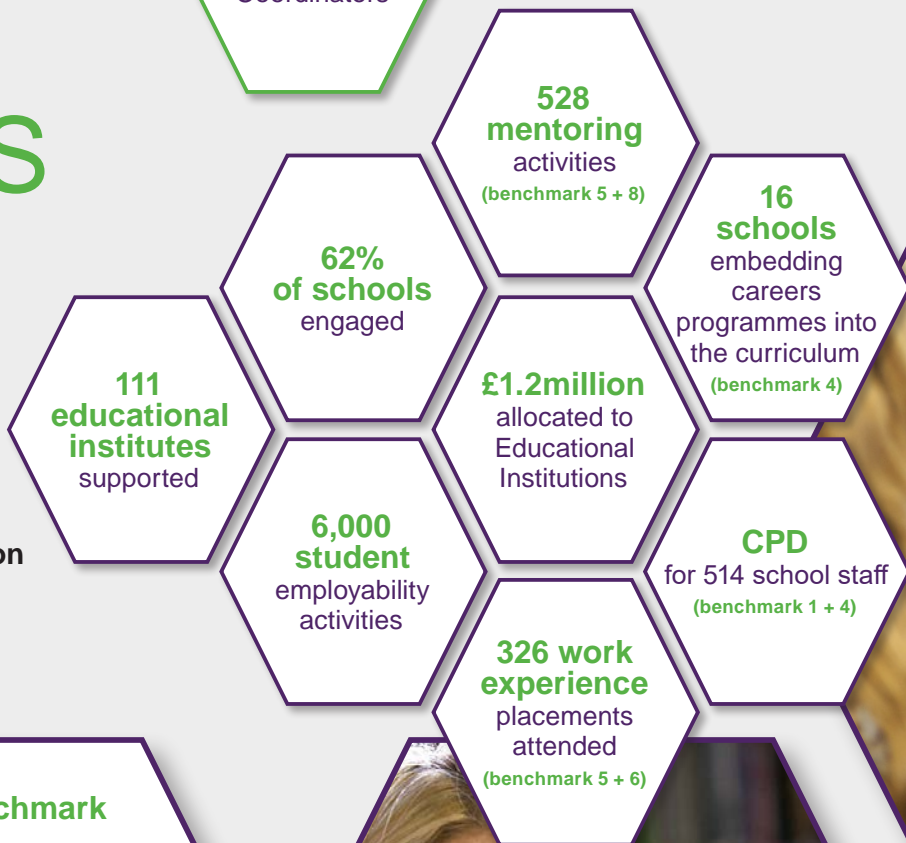


Over the last 2-years we have achieved:



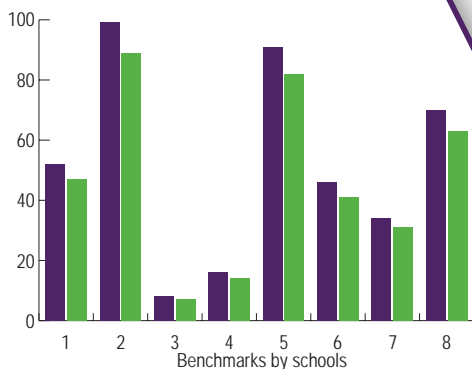
CAREERS Local

The only Local Enterprise Partnership area offering enterprise grants to schools and colleges to help them work towards achieving the Gatsby Benchmarks.



Supported by the 2014 to 2020 European Structural and Investment Funds Growth Programme

Gatsby Benchmark



Legend: ■ Schools ■ Total number of schools bid for CL (%)



The Impact Enterprise Advisers are having in D2N2

Rhonda Smith
Careers Advisor
East Leake Academy

"East Leake Academy is just about to start down the road of achieving a careers quality award. She has already attended Career Mark training with me. Having managed the achievement of Investors in People for her former, large organisation, I feel she will provide priceless insight into how to handle the process, including motivating all stakeholders to take an active part in meeting the required standards and providing the excellent careers and employability provision our students deserve."

Ian Greenway
D2N2 Employability
Champion

"It's important for schools to sign up to the EAN because the new head of Ofsted is saying we should have a broader set of measures for schools and employability skills are going up the agenda."

"I decided to join the network to bridge that gap between employers and schools."

My main aim is to produce a process with my school that will enable students to gain effective work experience/understanding. I am also going to work with the School to help make the curriculum more functional in the workplace."

Adam Plastow
Enterprise Adviser
Commercial Academy
& Apprenticeship
Manager
Volvo Group UK
Limited

Mandy Steel
Enterprise Adviser
HR Consultant

"The Careers Leader, Rhonda, is an established and experienced professional and provides a wide range of career opportunities and experiences for the students. Our styles complement each other and hopefully the difference I bring to the table is to give an outside view of the world of work and to offer challenge and support to the various experiences on offer to the young people. What could be more fulfilling than supporting the next generation into their chosen careers?"

Martin Care
Enterprise Adviser
Bombardier

"I'm working with Derby Moor Sports Academy and so far the engagement has been absolutely superb, I couldn't have asked for any more. The senior leadership team has been really engaged and the work with the staff has been very strong."

"We've got a good view of some of the strategic things to do, some of the activities that we're going to create with the school team during the next academic year. Its early days but the engagement has been really positive so far."

"Seeing those light bulbs come on, seeing those moments as we go through the process with the students is great but also seeing the teachers too, seeing them get involved and make a real difference by just tweaking things that they do already by making it relevant to employers and students."

Richard Fuller
Enterprise Adviser
County Battery

"We've worked together and we've looked at what we can do to build greater relationships between schools and businesses."

"It's a good opportunity to give a bit back"

Anna Smith
Enterprise Adviser
A Logical Ltd



Organisations Supporting Enterprise Adviser Activity in D2N2

A Logical Ltd	Careers Enterprise Company	Greencore	McCracken Consultancy	Rykneld Housing
Affinity Consultancy & Training Solutions	Chesterfield Football Club	Henry Boot Homes	Microsoft	Schneider Electric Ltd
AIM Commercial Services Ltd	Claro Vista Limited	Hilton Hotel (EMA)	Mitie Foundation	Sevacare
Asmech Systems Ltd	Collis Engineering	HL Plastics	MVIS Ltd	Solos Consultants
Babcock International	County Battery Services	Ideagen	News Journal	Techman Engineering
Bombardier	Crown Packaging	IPD Ltd	NGi (UK) Limited	Toyota UK
Blink Bright Limited	DEBP	Jurys Inn	Nottinghamshire County Council	United Cast Bar
Bulwell Precision	Dijitua Ltd	KC-Jones	Odyssey HR Ltd	Volvo Group UK Ltd
Burn the Book	Double T	Kohl Kreatives	ONYC	Warbutorns
Business Wise Consultancy	Eaton Corporation	Laing O'Rourke Construction	Public Health England	Wates
Calverton Finance	Fairgrove Housing	Lindhurst Engineering Ltd	Qinesis	Wates Construction
Cap Gemini UK	Fast Graphics	Lucy Rennie Communications	RBS	William Davis Homes
	GF Tomlinson	M&A 2020 Makelt Group	Robert Woodhead	Willmott Dixon
	GI Group		Rolls Royce plc	Woodhead Group Ltd
			RSPB	

Our Short Term Priorities

- As many schools as possible to sign up to the D2N2 Employability Framework and pledge to the D2N2 Six Aspirations
- As many schools as possible to complete COMPASS – Careers Benchmark Tool
- All Schools on the Enterprise Adviser Network Register to be matched to an Enterprise Adviser
- Raise the 'quality' of the D2N2 Network

The Enterprise Adviser Network is key to achieving our vision and our aspirations

The D2N2 Enterprise Adviser Network is part funded by the Careers and Enterprise Company and matched and delivered through the D2N2 LEP's strategic partnerships with Derbyshire County Council, Futures Advice, Skills and Employment, Chesterfield and Bolsover Learning Community, Rushcliffe Borough Council and the Evolve Trust.

For more information go to: www.d2n2schools.co.uk

FUNDING PARTNER
DANCOP
DERBYSHIRE & NOTTINGHAMSHIRE
COLLABORATIVE OUTREACH
PROGRAMME

THE **CAREERS &
ENTERPRISE**
COMPANY

D2N2
Derby
Derbyshire
Nottingham
Nottinghamshire
Enterprise Adviser
Network