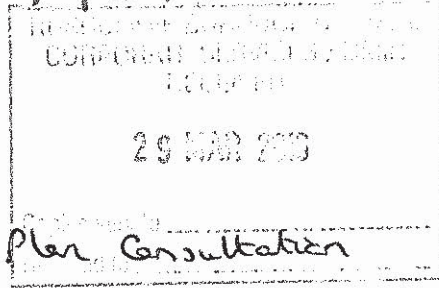


775483



Rushcliffe Local Plan Consultation

10 Melton Grove
West Bridgford
Nottingham,
NG2 7NX

24-03-16

Dear Sir/Madam

Thank you for your letter of 29-01-16.

As I work full time, I was unable to attend the public drop-in event in West Bridgford. As this is my first day's holiday since 1st January, I have had very little time to read all your planning reports.

I still am opposed to building houses and shops round Sherpills.

With all the expansion proposed, will the Council encourage Network Rail and East Midlands Trains to:

- 1) improve the train service to Radcliffe on Trent
it has 5 trains each way with an 8 hour gap in services to Nottingham from 1209 to 2012
- 2) improve the train service to Bingham
- 3) open the old railway to Cotgrave to passenger traffic
and open a Park and Ride station near the A52.

Yours faithfully

