



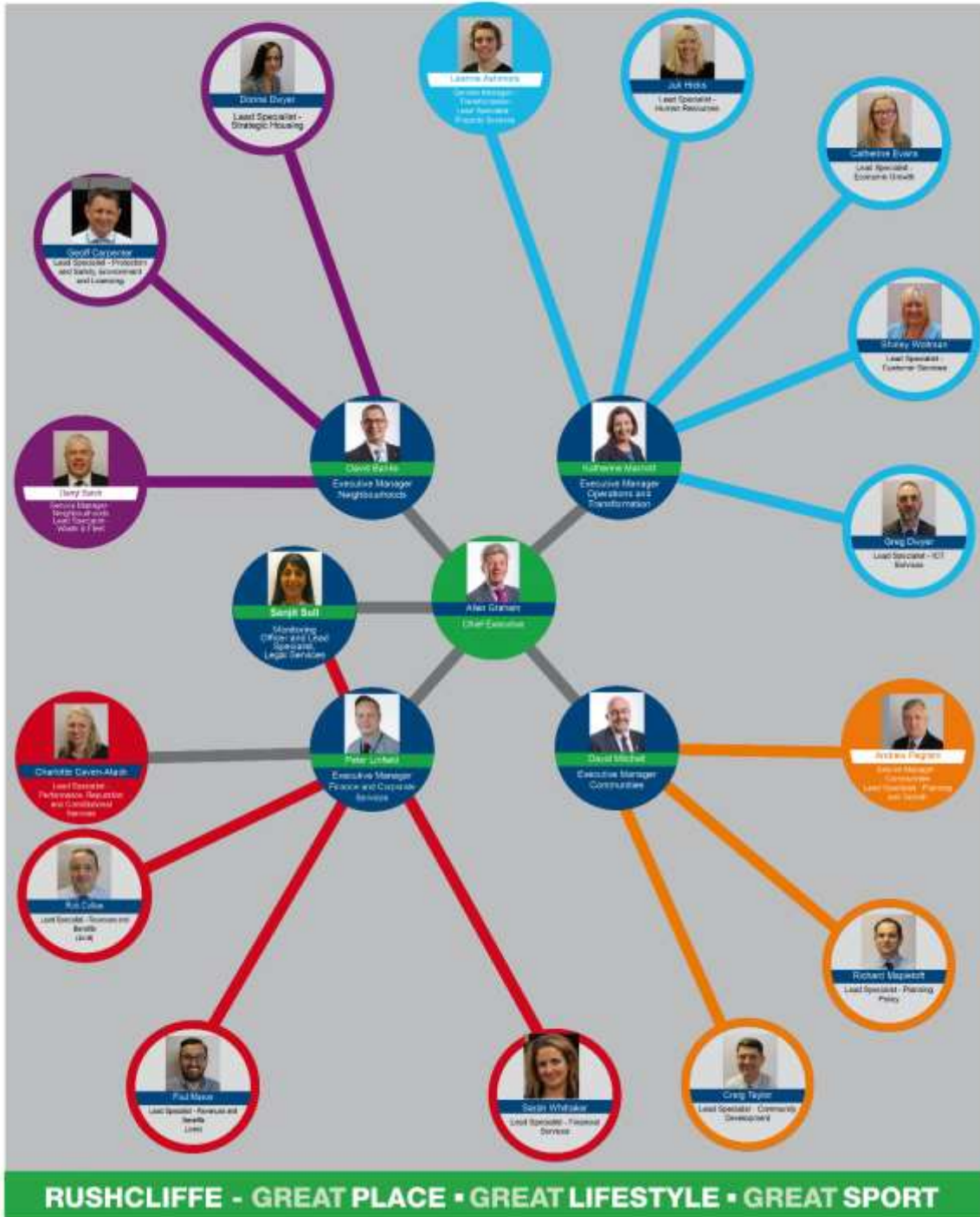
RUSHCLIFFE BOROUGH  
COUNCIL  
CONSTITUTION

PART 2

POLITICAL LEADERSHIP AND  
MANAGEMENT STRUCTURE

# MANAGEMENT TEAM

Service delivery structure  
2019



# Cabinet Structure



**Cllr Simon Robinson**  
Leader of the Council

**OVERALL DIRECTION, FOCUS AND VISION FOR THE COUNCIL**

- Overall direction, focus and vision
- Corporate Strategy
- Medium Term Financial Strategy (MTFS)
- Budgetary Policy (linking with MTFS and four year plan)
- Strategic Economic and Business Growth
- Collaboration/Partnerships/Combined Authorities/Devolution
- Property Development/Investment projects



**Cllr Debbie Mason**  
Deputy Leader of the Council

**Cabinet portfolio holder  
FOR COMMUNITY & LEISURE**

- Community and Cultural Events and Services (YouNG, Positive Futures, Health Promotion and Awards)
- Parish Council Forums & Relationships
- Health & Wellbeing



**Cllr Andy Edyvean**

**Cabinet portfolio holder  
FOR ECONOMIC & BUSINESS**

- Growth Boards
- Business Support and Development
- Business Clubs
- Investment and Funding Generation
- Property Investment Development
- Growth Deal Funding (Monitoring and Future Bidding)
- Employment and Skills Support and Development



**Cllr Gordon Moore**

**Cabinet portfolio holder  
FOR FINANCE**

- IT Strategy and Investment
- Budget/Income generation
- Housing Benefits
- Treasury Management
- Business rates
- Council Tax
- Universal Credit



**Cllr Roger Upton**

**Cabinet portfolio holder  
FOR HOUSING & PLANNING**

- Major Development Sites Within the Borough
- Planning Policy
- Transportation Infrastructure
- Housing Provision & Development (Social & Private)



Rushcliffe  
Borough Council

# Scrutiny Groups

## Performance Management Board



Cllr Gordon Wheeler  
CHAIRMAN



Cllr Hayley Chewings  
VICE CHAIRMAN

## Corporate Governance Group



Cllr Kevin Beardsall  
CHAIRMAN



Cllr George Davidson  
VICE CHAIRMAN

## Partnership Delivery Group



Cllr Jean Smith  
CHAIRMAN



Cllr Jean Greenwood  
VICE CHAIRMAN

## Community Development Group



Cllr Tina Combellack  
CHAIRMAN



Cllr John Thurman  
VICE CHAIRMAN

RUSHCLIFFE - GREAT PLACE • GREAT LIFESTYLE • GREAT SPORT





# Know your Councillor

 <b>Reg Adair Bunny</b> 0115 984 7412 Conservative	 <b>Kevin Beardsall Edwalton</b> 0115 933 6336 Conservative	 <b>Andrew Brown Sutton Bonington</b> 01509 820 476 Conservative	 <b>Martin Buckle Ruddington</b> 07979 443 411 Conservative	 <b>Brian Buschman Abbey</b> 0115 981 5472 Conservative	 <b>Richard Butler Cotgrave</b> 0115 989 2504 Conservative	 <b>Hayley Chewings Cotgrave</b> 0115 989 0162 Labour	 <b>Neil Clarke Radcliffe on Trent</b> 0115 914 8277 Conservative	 <b>Tina Combellaq Neville and Langar</b> 01664 823 105 Conservative	 <b>Barrie Cooper Gamston South</b> 0115 914 9359 Conservative	 <b>John Cottee Keyworth and Wolds</b> 0115 783 9052 Conservative
 <b>George Davidson Bingham East</b> 01949 838 564 Independent	 <b>Angela Dickinson Abbey</b> 0115 974 9960 Conservative	 <b>Julie Donoghue Lutterell</b> 07730 414 746 Conservative	 <b>Martin Edwards Lutterell</b> 0115 981 4025 Labour	 <b>Andy Edyvean Keyworth and Wolds</b> 01509 881 476 Conservative	 <b>Jean Greenwood Ruddington</b> 0115 984 5218 Conservative	 <b>Ron Hetherington Leake</b> 01509 880 760 Conservative	 <b>Susan Hull Bingham East</b> 01949 839 346 Independent	 <b>Rob Inglis Keyworth and Wolds</b> 0115 822 4502 Conservative	 <b>Christine Jeffreys Cotgrave</b> 0115 989 2629 Conservative	 <b>Rod Jones Musters</b> 0115 914 8616 Liberal Democrat
 <b>Karrar Khan Musters</b> 0115 914 6758 Liberal Democrat	 <b>Nigel Lawrence East Bridgford</b> 01949 20619 Conservative	 <b>John Lungley Ruddington</b> 0115 921 4876 Conservative	 <b>Alistair MacInnes Trent Bridge</b> 0115 923 2592 Labour	 <b>Marie Males Leake</b> 01509 852 456 Conservative	 <b>Richard Mallender Lady Bay</b> 07976 775 619 Green	 <b>Sue Mallender Lady Bay</b> 0115 914 0529 Green	 <b>Debbie Mason Tollerton</b> 0115 937 7293 Conservative	 <b>Rex Walker Gotham</b> 07812 146386 Conservative	 <b>Gordon Moore Cropwell</b> 0115 933 5141 Conservative	 <b>Sarah Bailey Thoroton</b> 01664 820 470 Conservative
 <b>Alan Phillips Compton Acres</b> 0115 914 9293 Conservative	 <b>Liz Plant Trent Bridge</b> 0115 914 2356 Labour	 <b>Francis Purdue-Horan Bingham West</b> 01949 839 071 Conservative	 <b>Simon Robinson Edwalton</b> 0115 982 5667 Conservative	 <b>Jean Smith Radcliffe on Trent</b> 0115 933 3616 Conservative	 <b>John Stockwood Bingham West</b> 01949 875 776 Conservative	 <b>Maureen Stockwood Cranmer</b> 01949 875 778 Conservative	 <b>John Thurman Leake</b> 01509 852 834 Conservative	 <b>Roger Upton Radcliffe on Trent</b> 0115 933 3681 Conservative	 <b>Gordon Wheeler Compton Acres</b> 0115 945 5701 Conservative	 <b>Jonathan Wheeler Gamston North</b> 07725 655 328 Conservative

RUSHCLIFFE - GREAT PLACE • GREAT LIFESTYLE • GREAT SPORT

