



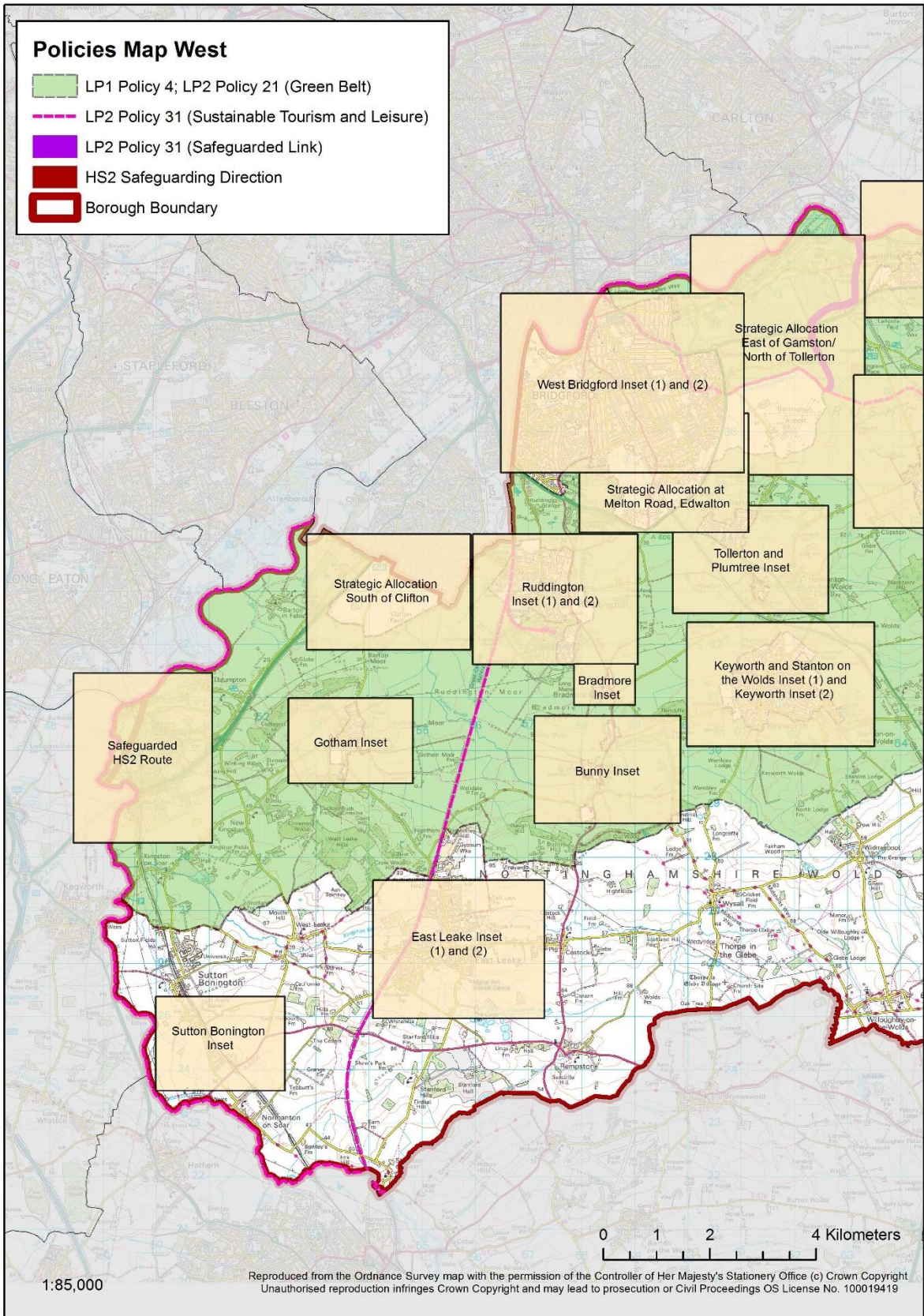
# **Rushcliffe Local Plan**

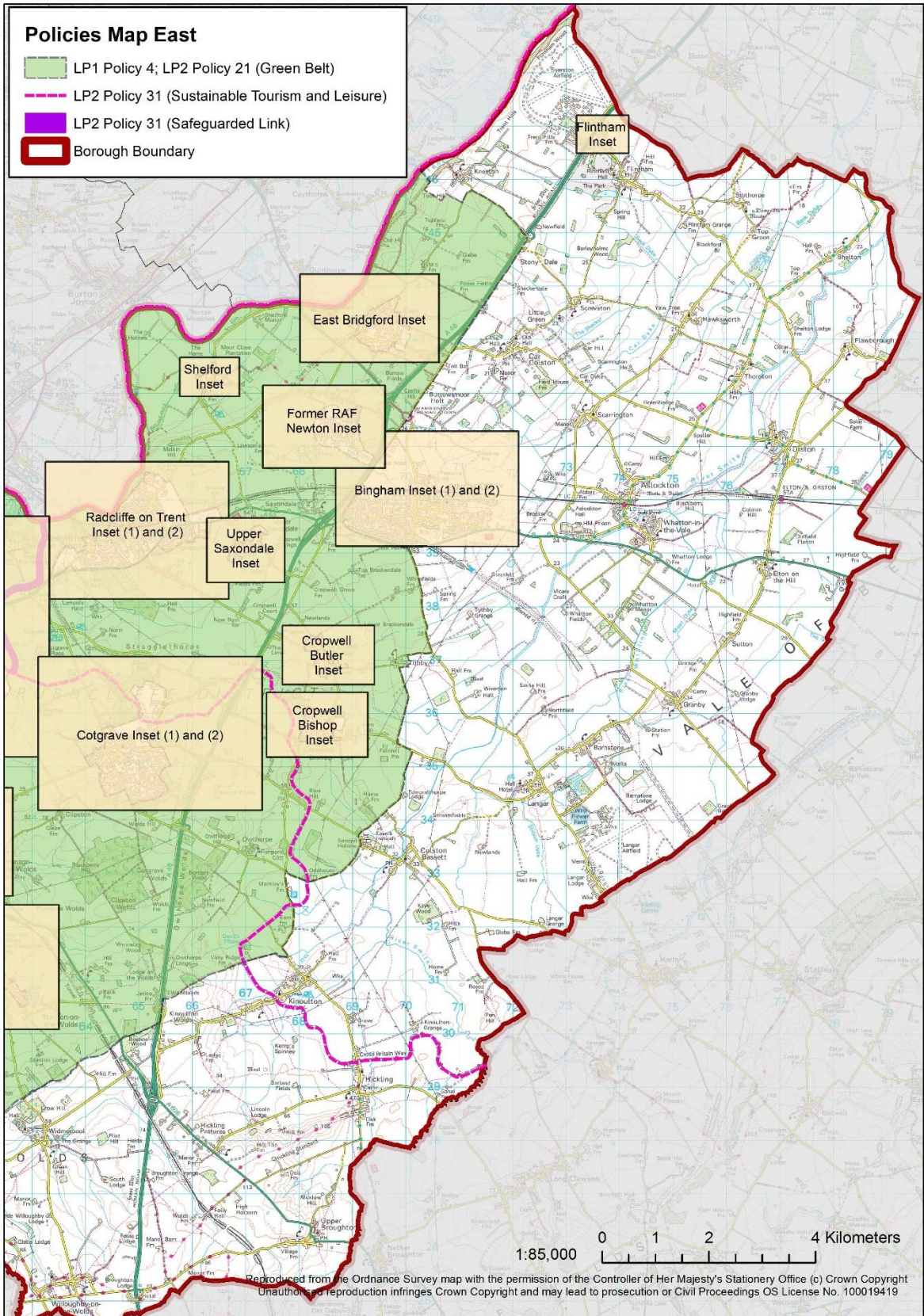
## **Adopted Policies Map**

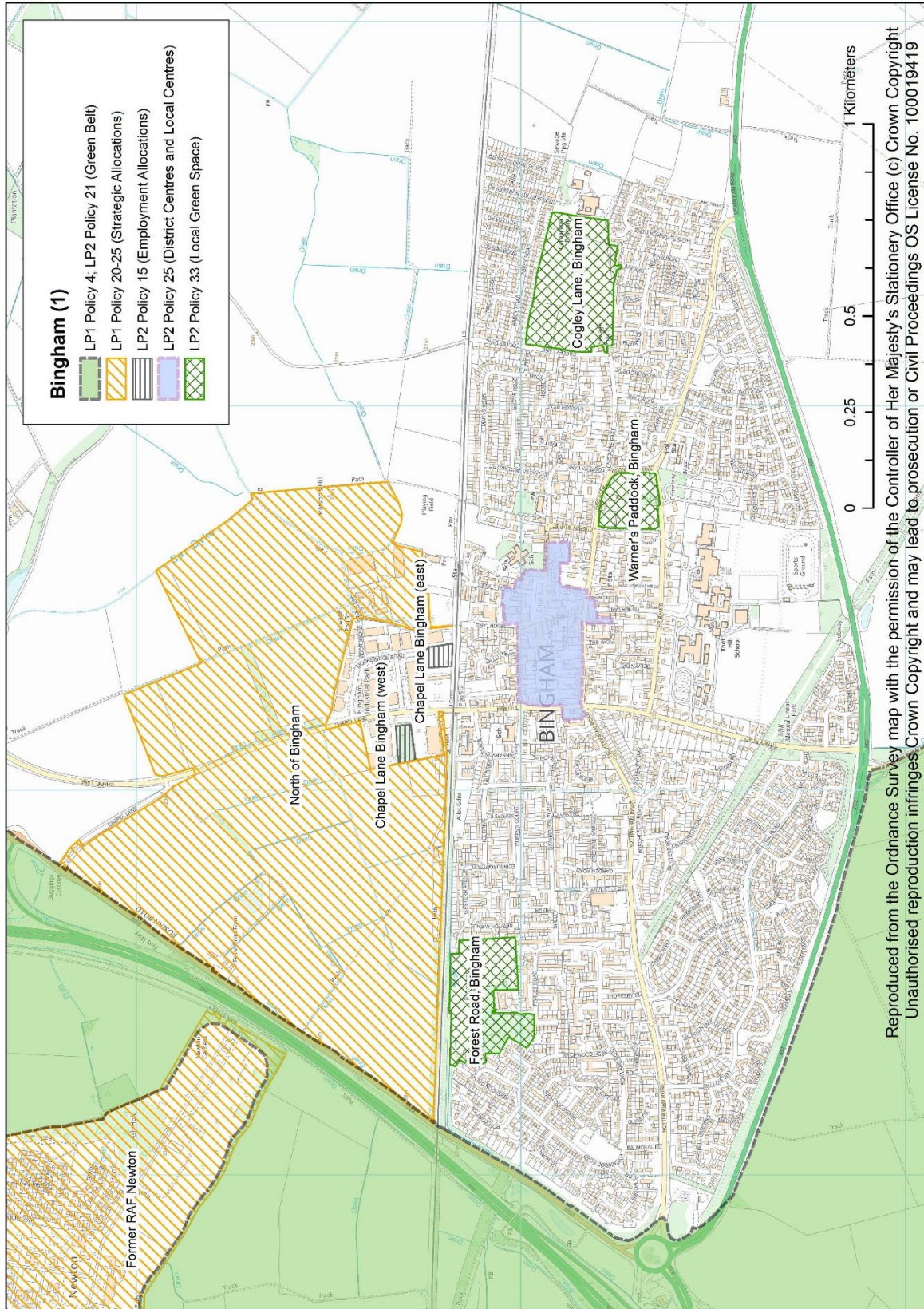
**October 2019**

# Contents

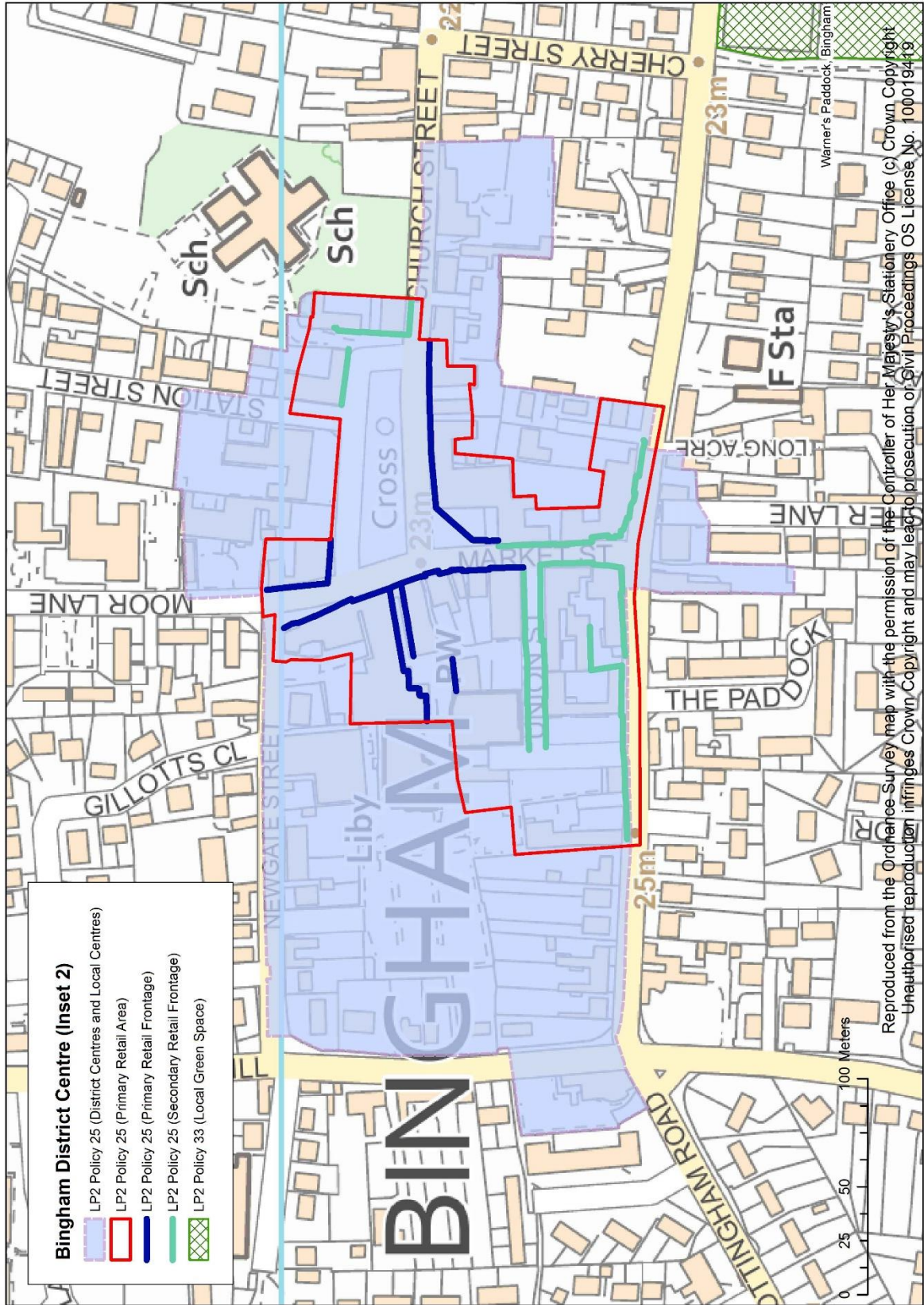
Policies Map West	1
Policies Map East	2
Bingham Inset 1	3
Bingham Inset 2 (District Centre)	4
Bradmore	5
Bunny	6
Cotgrave Inset 1	7
Cotgrave Inset 2 (Local Centre)	8
Cropwell Bishop	9
Cropwell Butler	10
East Bridgford	11
East Leake Inset 1	12
East Leake Inset 2 (Local Centre)	13
Flintham	14
Gotham	15
Keyworth and Stanton on the Wolds Inset 1	16
Keyworth Inset 2 (Local Centres)	17
Radcliffe on Trent Inset 1	18
Radcliffe on Trent Inset 2 (Local Centre)	19
Ruddington Inset 1	20
Ruddington Inset 2 (Local Centre)	21
Shelford	22
Sutton Bonington	23
Tollerton and Plumtree	24
Upper Saxondale	25
West Bridgford	26
West Bridgford District Centre	27
Strategic Allocation at East of Gamston/North of Tollerton	28
Strategic Allocation at Former RAF Newton	29
Strategic Allocation at Melton Road, Edwalton	30
Strategic Allocation South of Clifton	31
HS2 Safeguarded Route	32

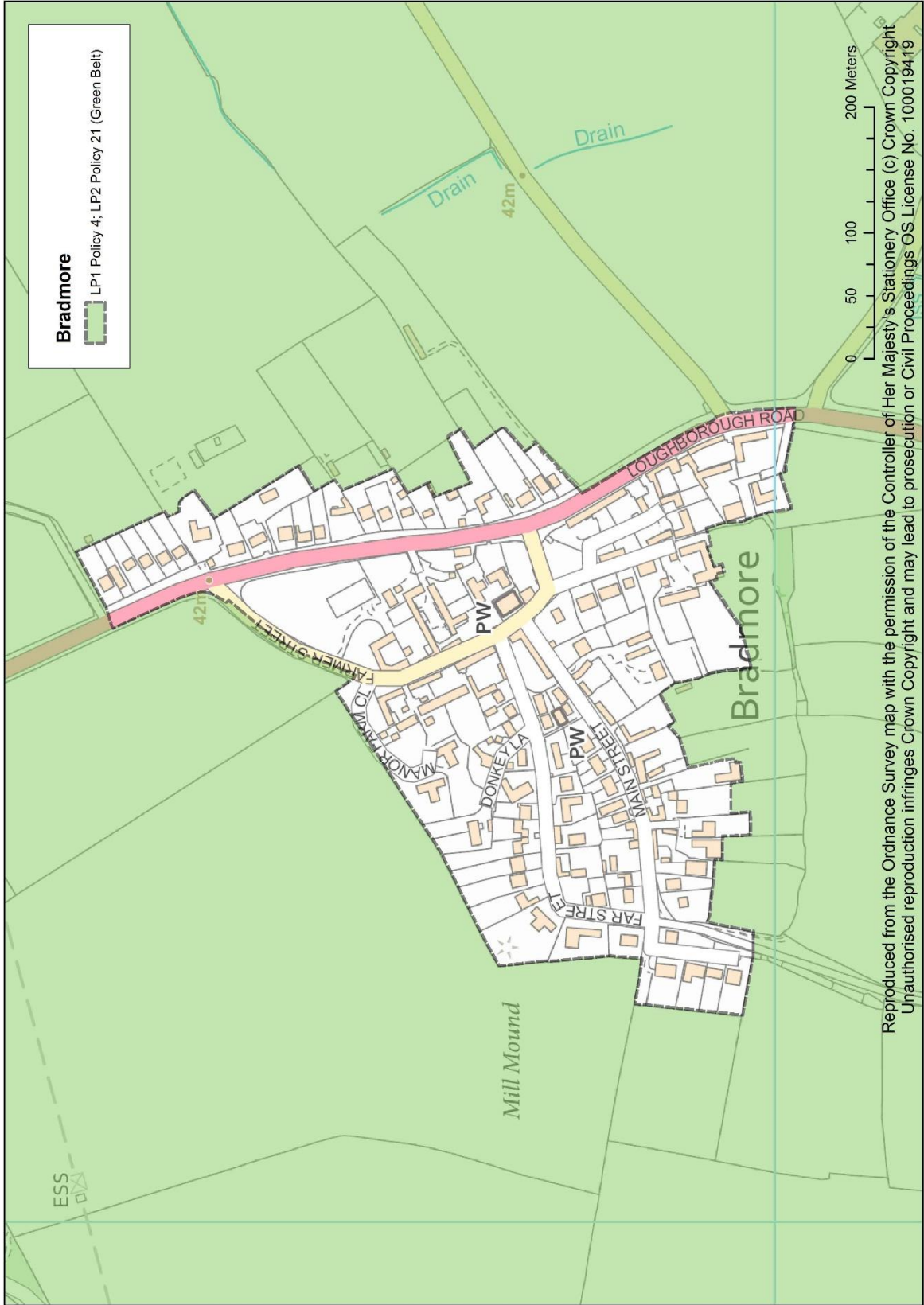






Reproduced from the Ordnance Survey map with the permission of the Controller of Her Majesty's Stationery Office (c) Crown Copyright  
 Unauthorised reproduction infringes Crown Copyright and may lead to prosecution or Civil Proceedings OS License No. 100019419

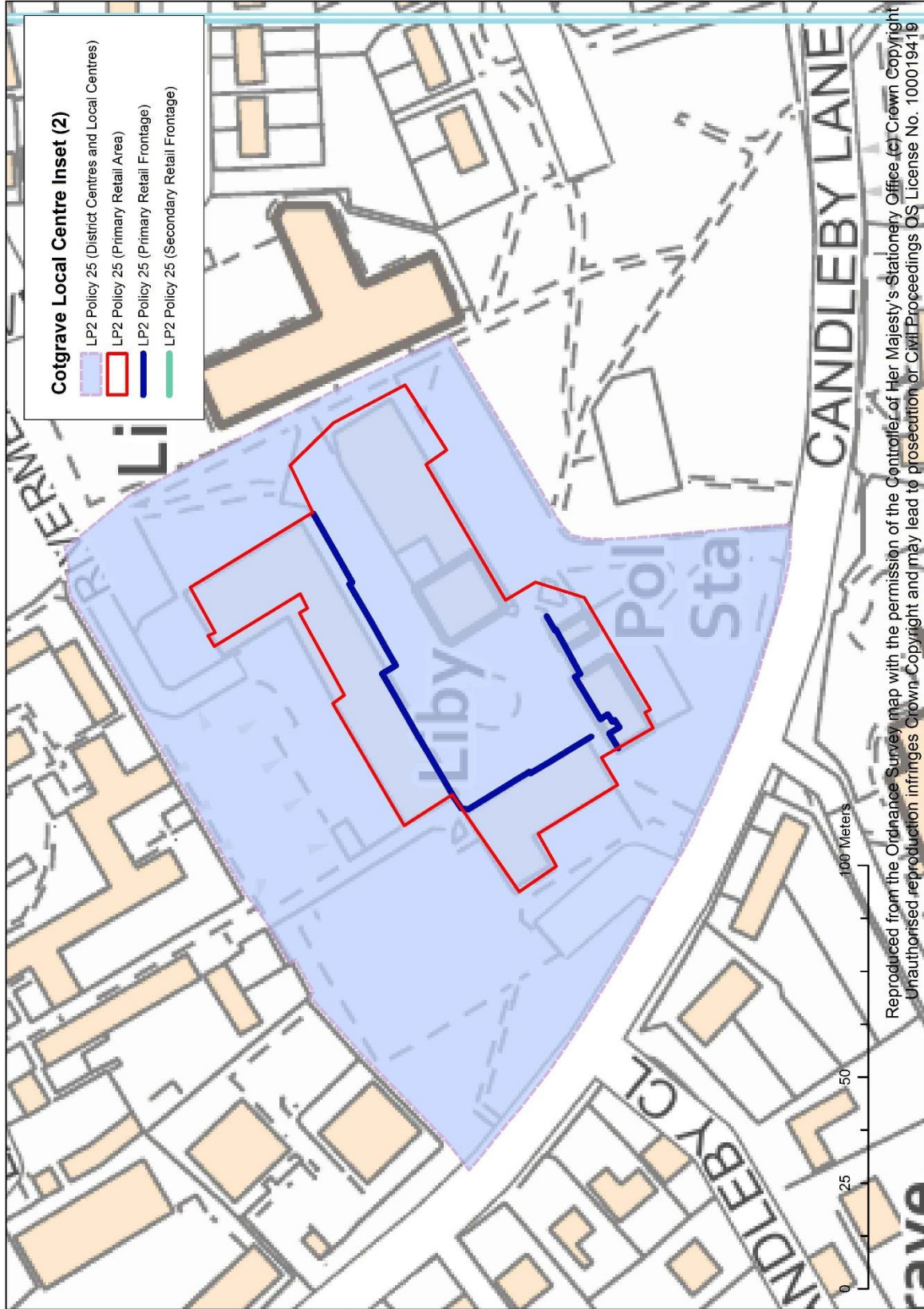






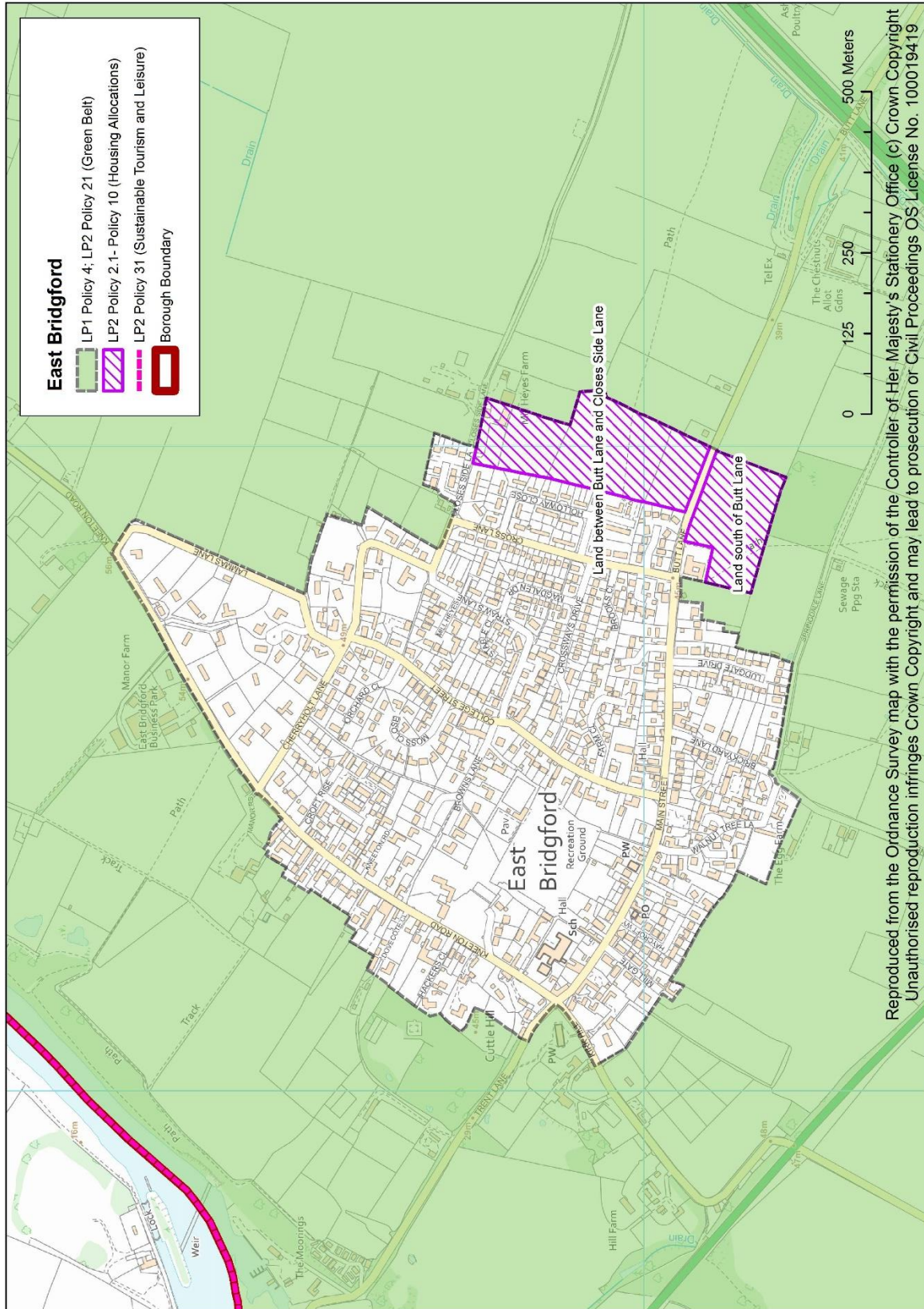




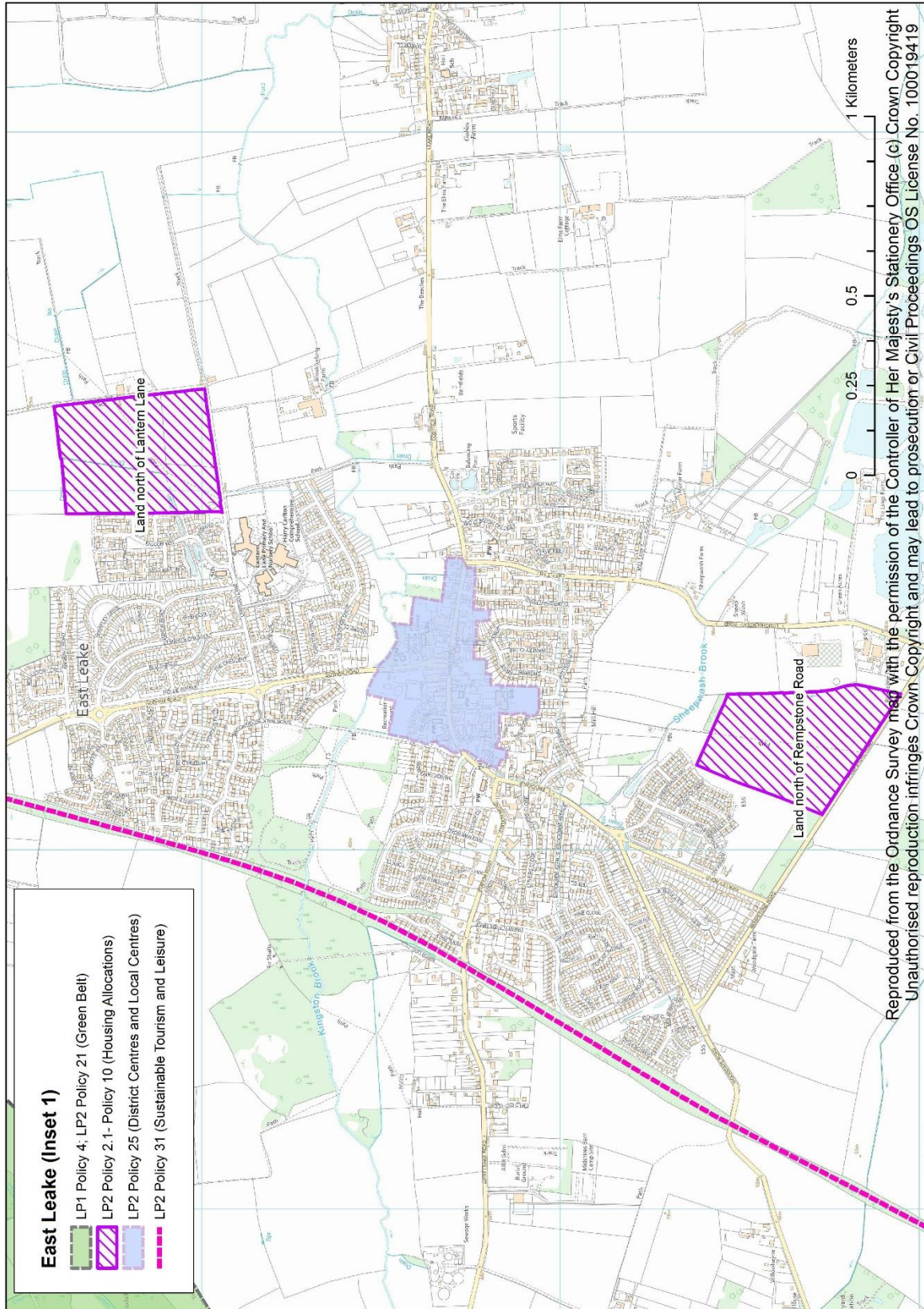




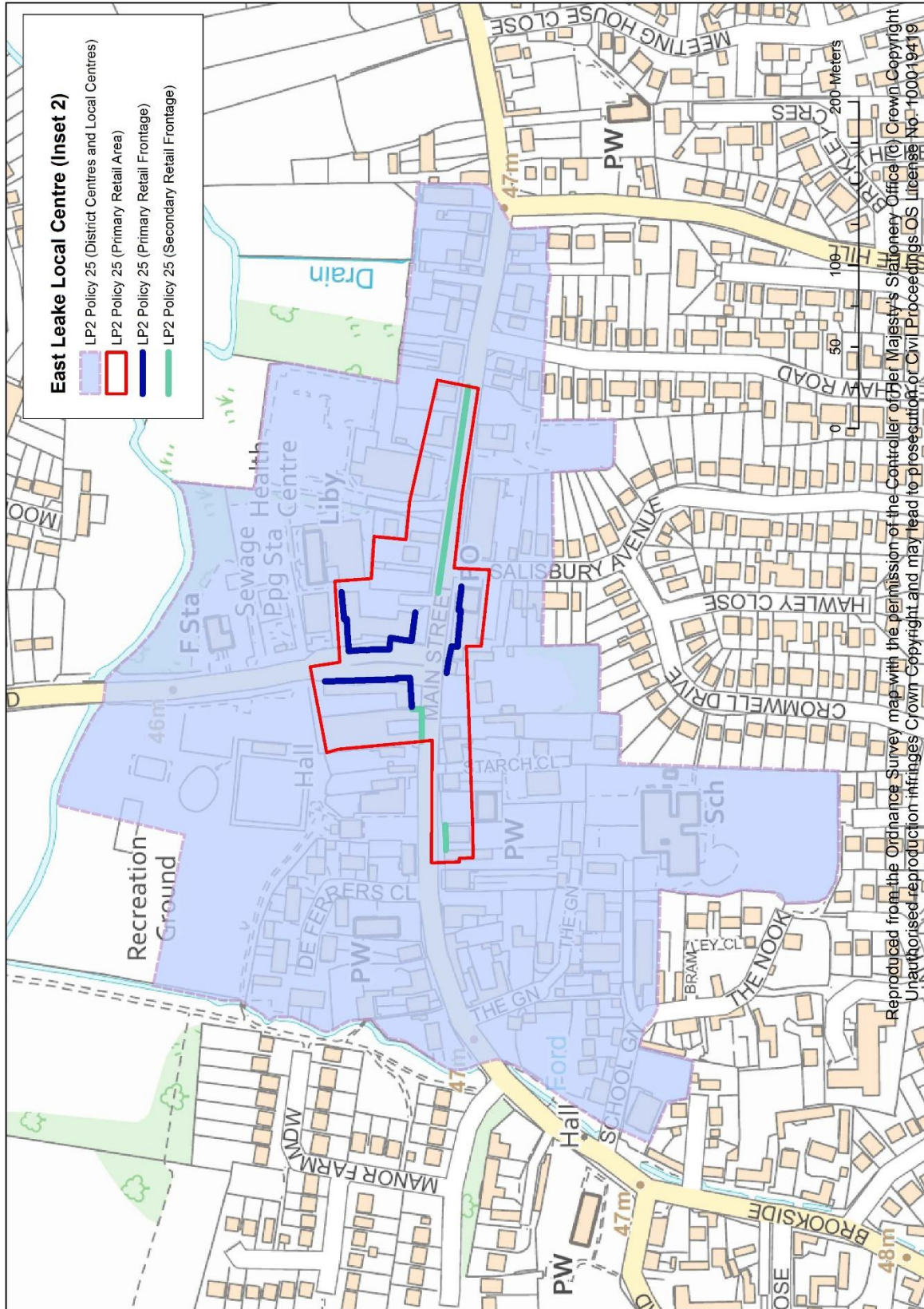


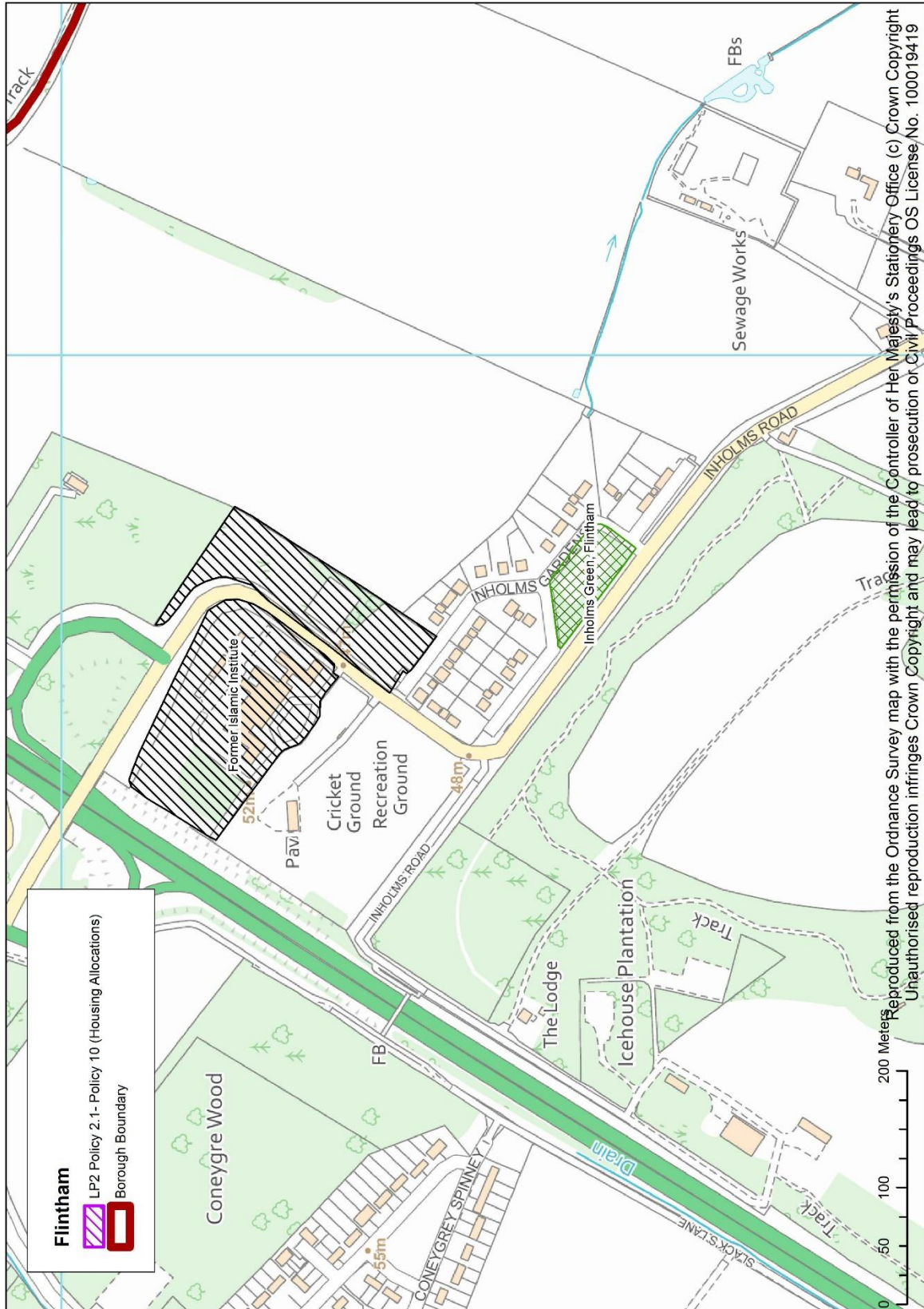


Reproduced from the Ordnance Survey map with the permission of the Controller of Her Majesty's Stationery Office (C) Crown Copyright  
 Unauthorised reproduction infringes Crown Copyright and may lead to prosecution or Civil Proceedings OS License No. 100019419



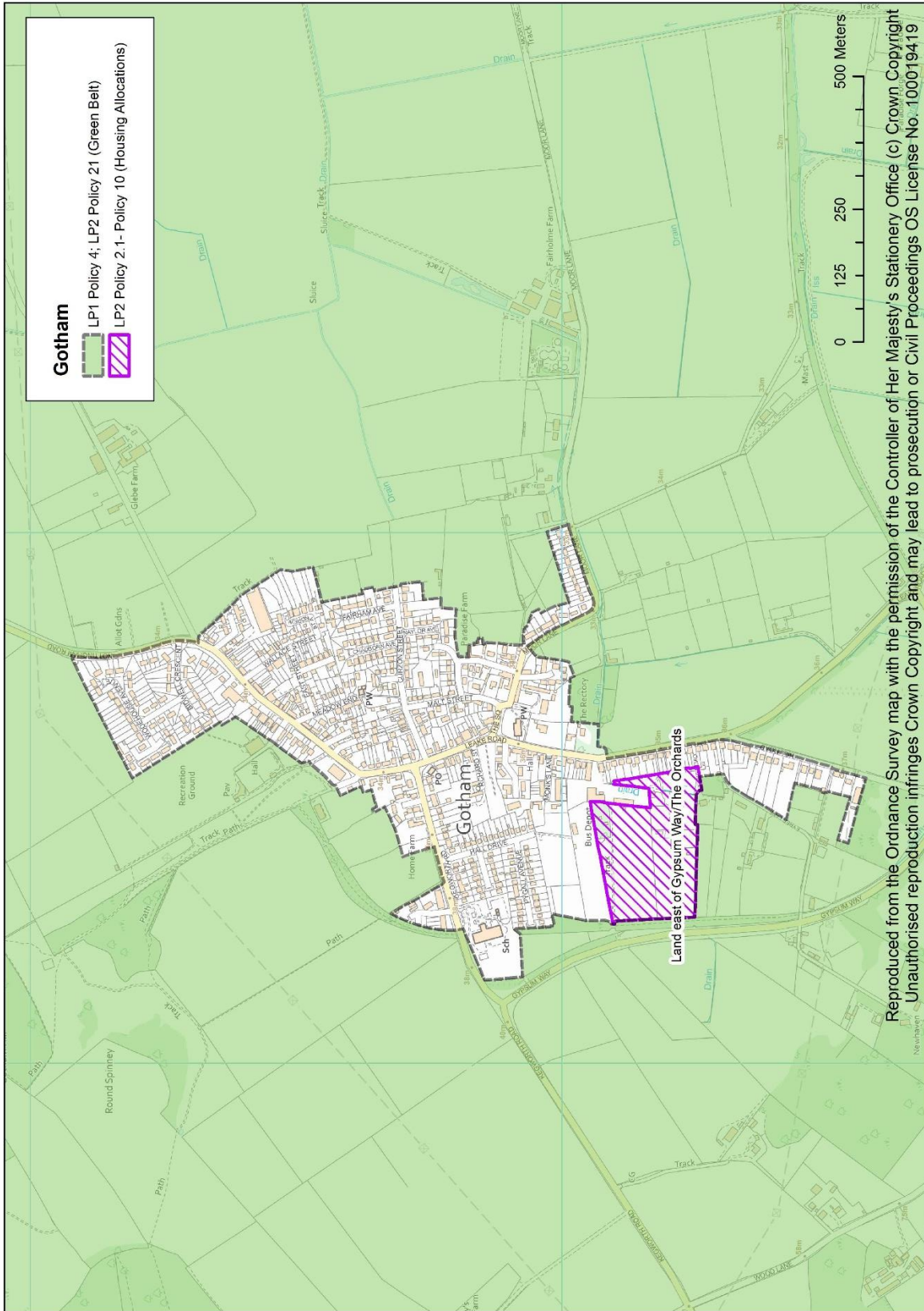
Reproduced from the Ordnance Survey map with the permission of the Controller of Her Majesty's Stationery Office (c) Crown Copyright  
 Unauthorised reproduction infringes Crown Copyright and may lead to prosecution or Civil Proceedings OS License No. 100019419



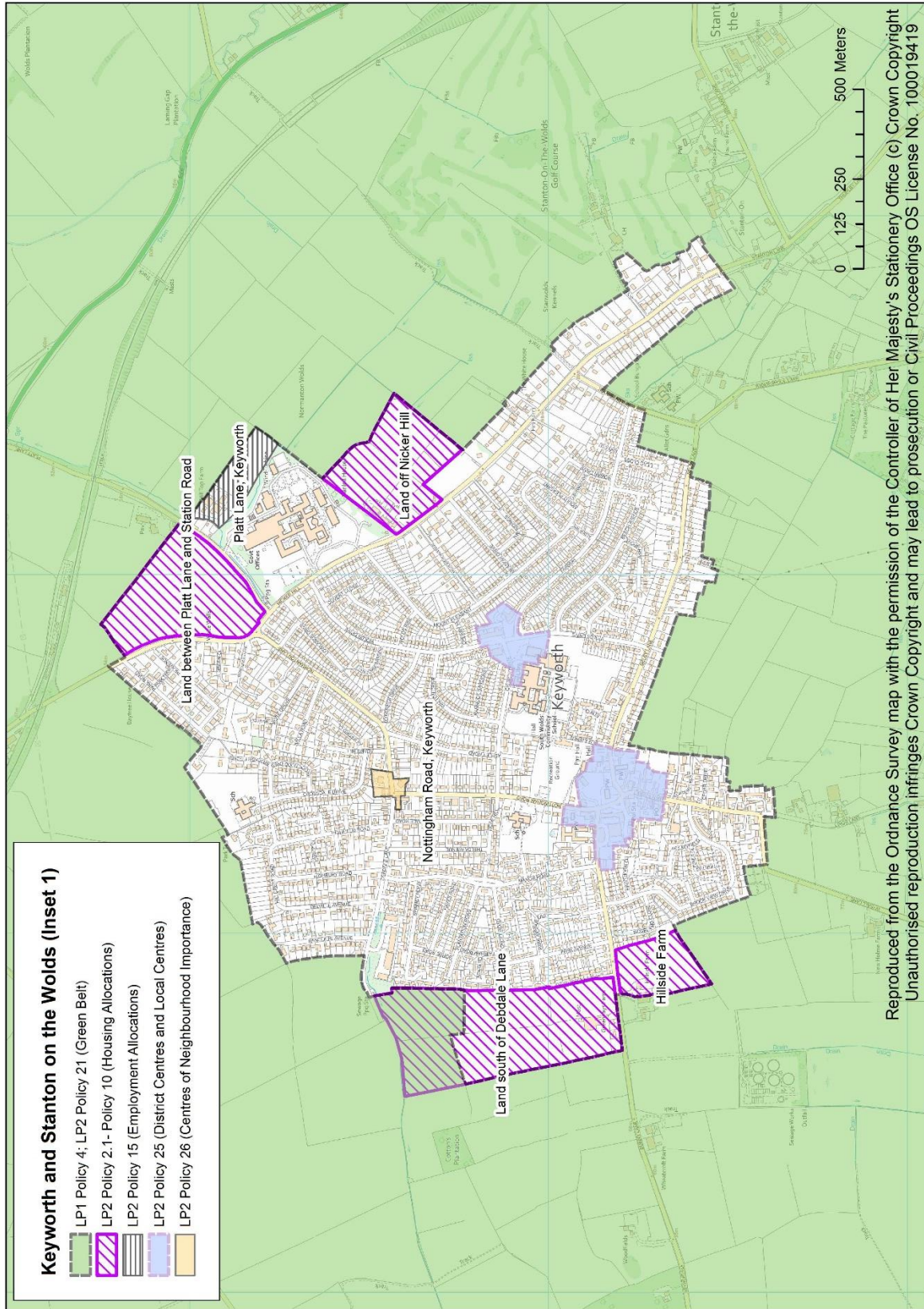


Reproduced from the Ordnance Survey map with the permission of the Controller of Her Majesty's Stationery Office (c) Crown Copyright  
 Unauthorised reproduction infringes Crown Copyright and may lead to prosecution or Civil Proceedings OS License No. 100019419

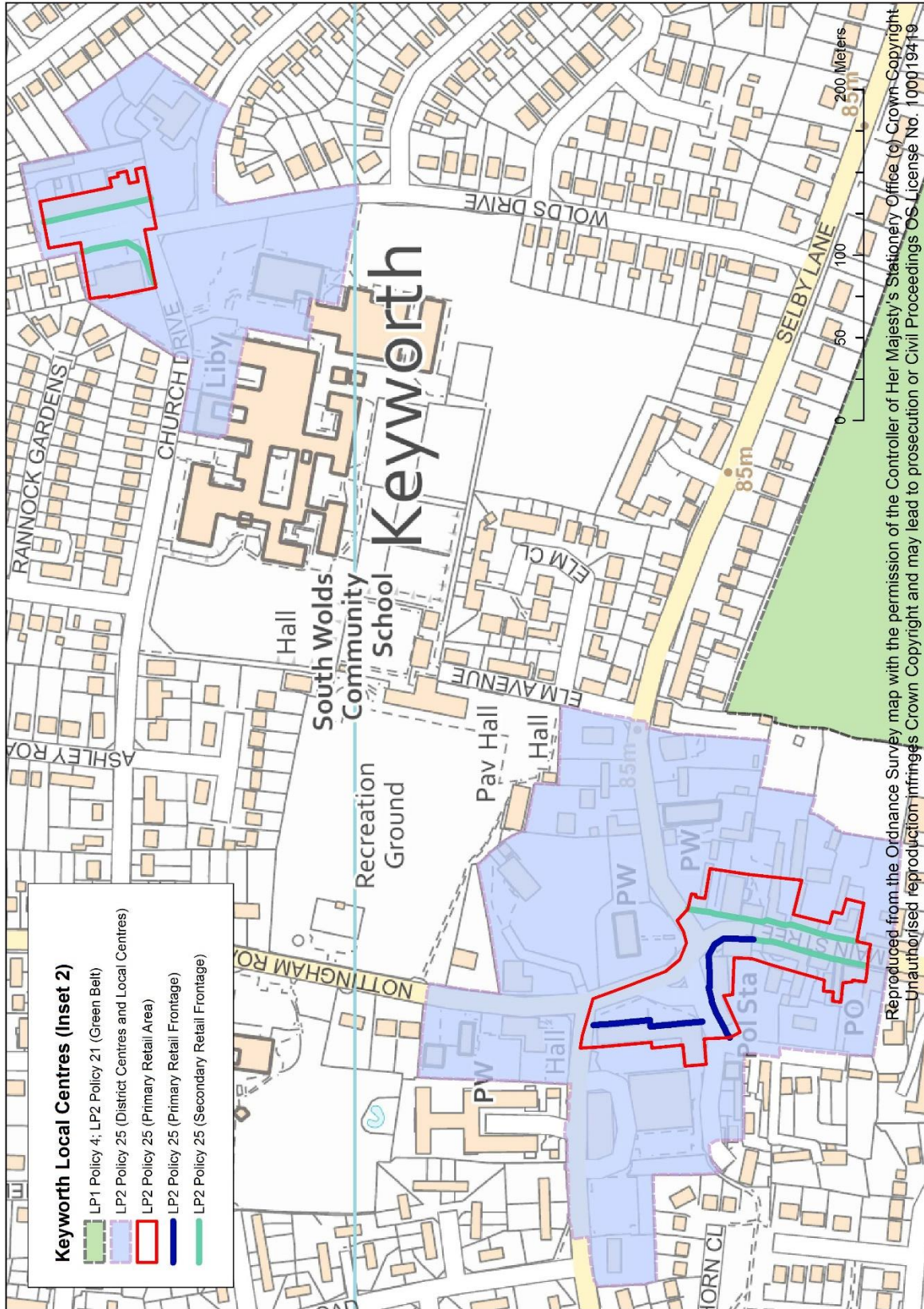




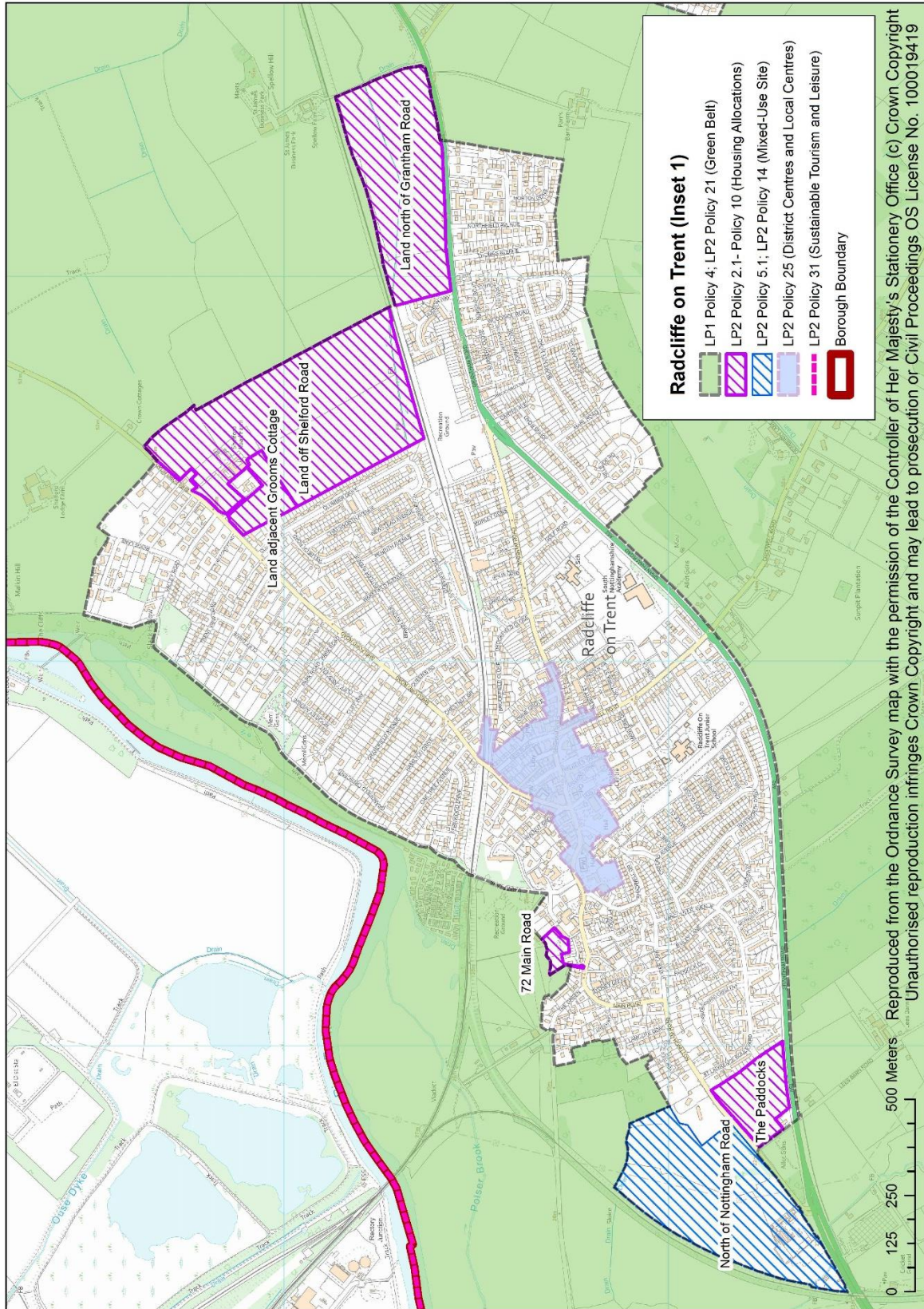
Reproduced from the Ordnance Survey map with the permission of the Controller of Her Majesty's Stationery Office (c) Crown Copyright  
 Unauthorised reproduction infringes Crown Copyright and may lead to prosecution or Civil Proceedings OS License No. 100019419



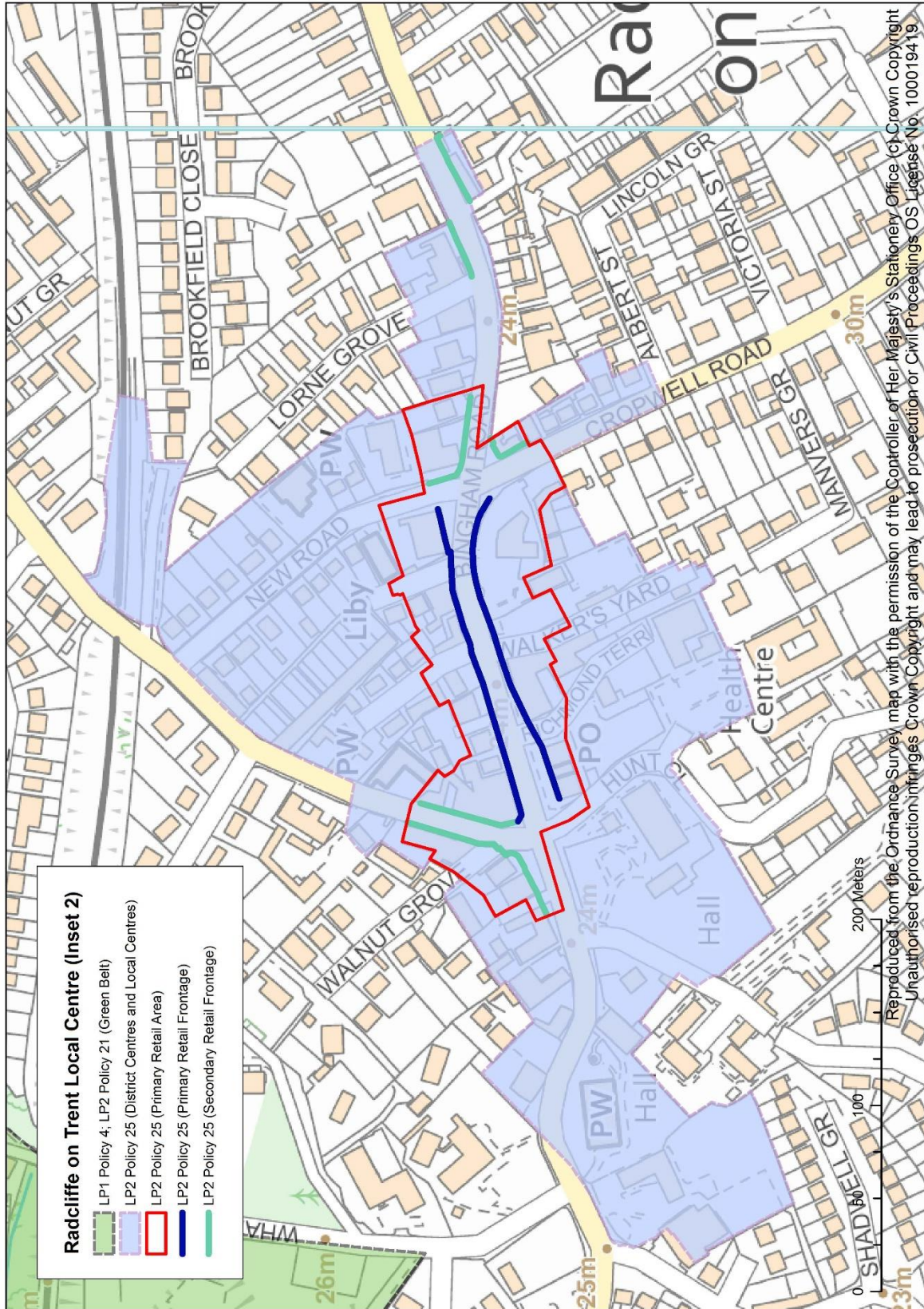
Reproduced from the Ordnance Survey map with the permission of the Controller of Her Majesty's Stationery Office (c) Crown Copyright  
 Unauthorised reproduction infringes Crown Copyright and may lead to prosecution or Civil Proceedings OS License No. 100019419

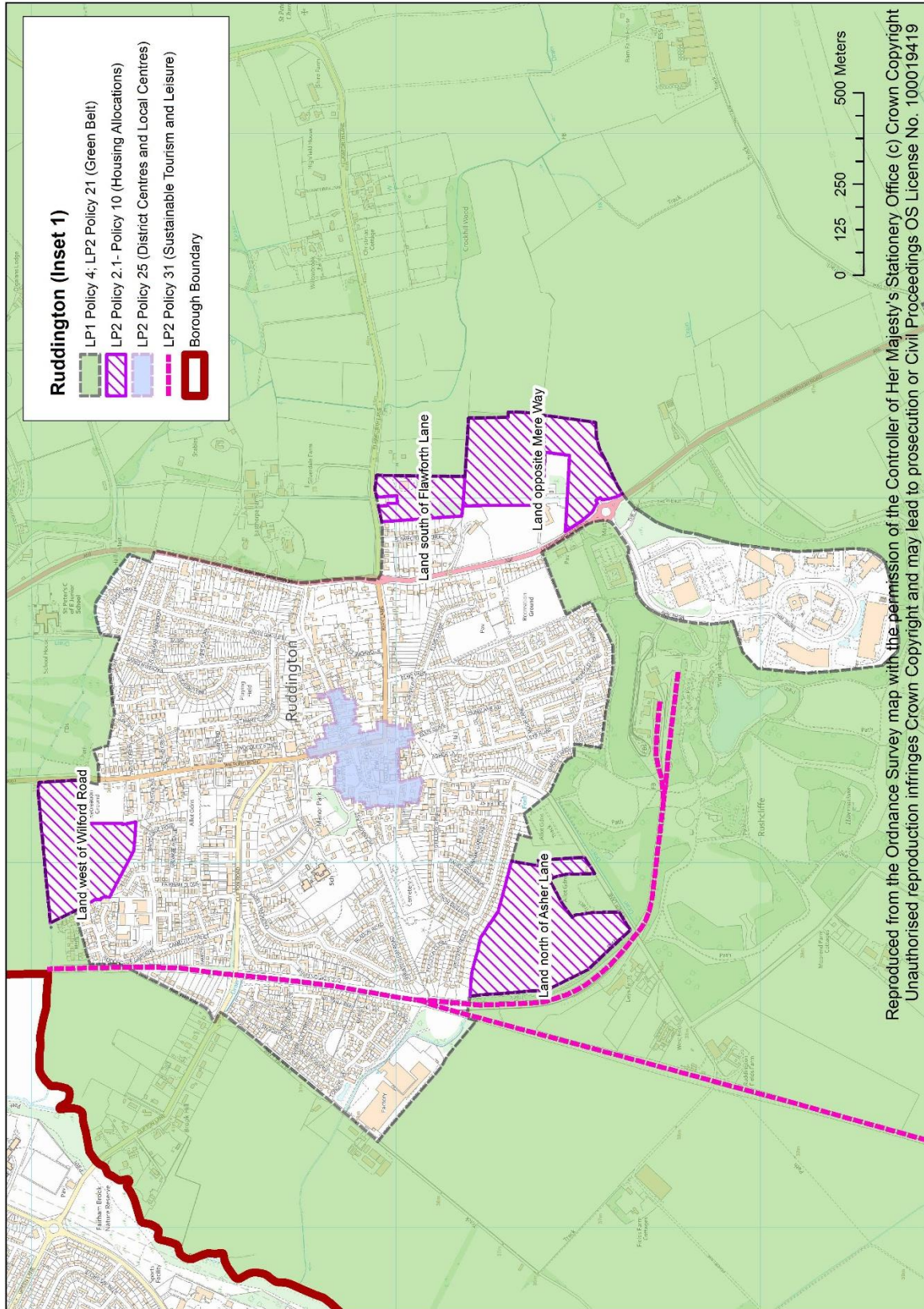


Reproduced from the Ordnance Survey map with the permission of the Controller of Her Majesty's Stationery Office (c) Crown-Copyright. Unauthorised reproduction infringes Crown Copyright and may lead to prosecution or Civil Proceedings OS License No. 100019419

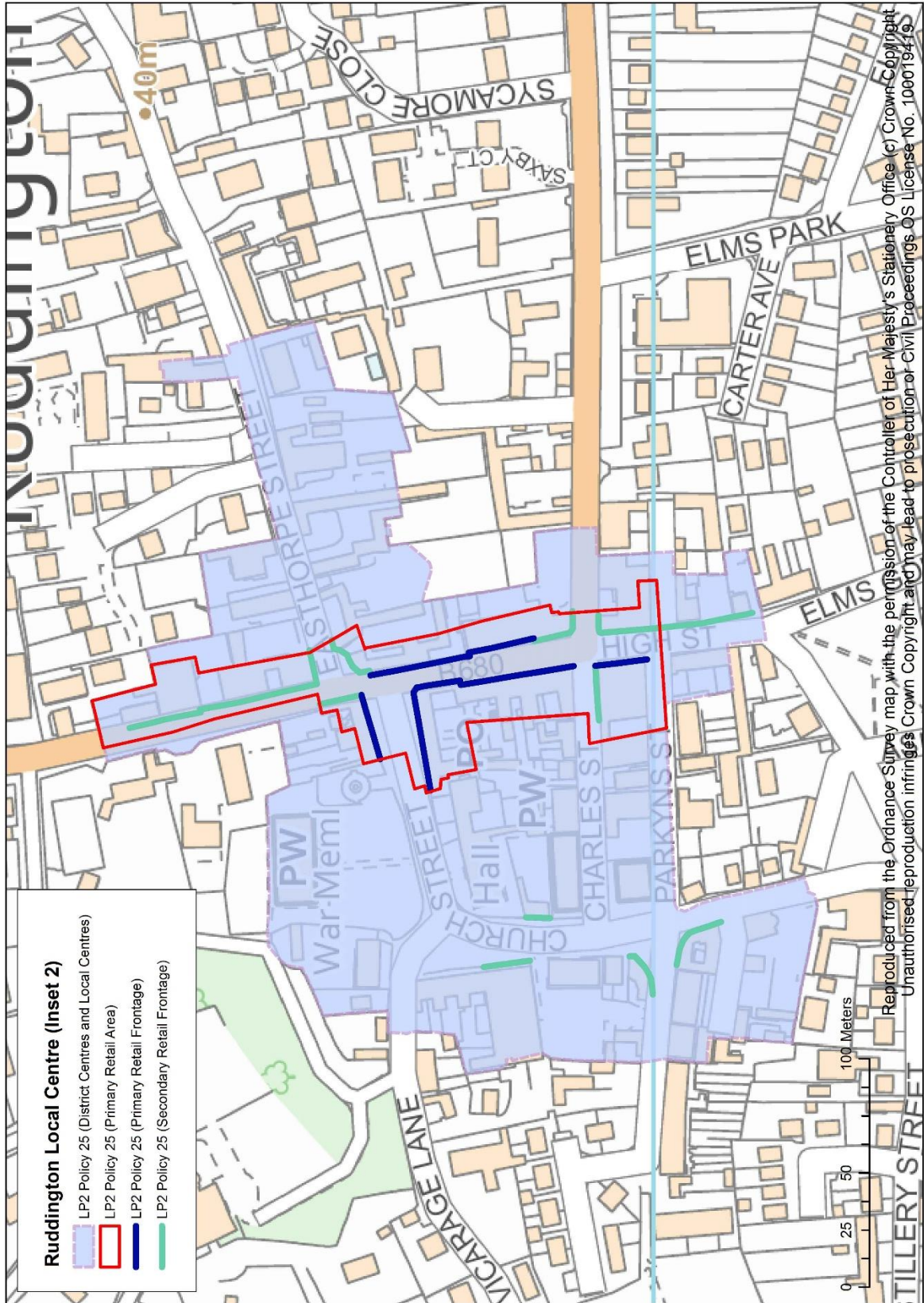


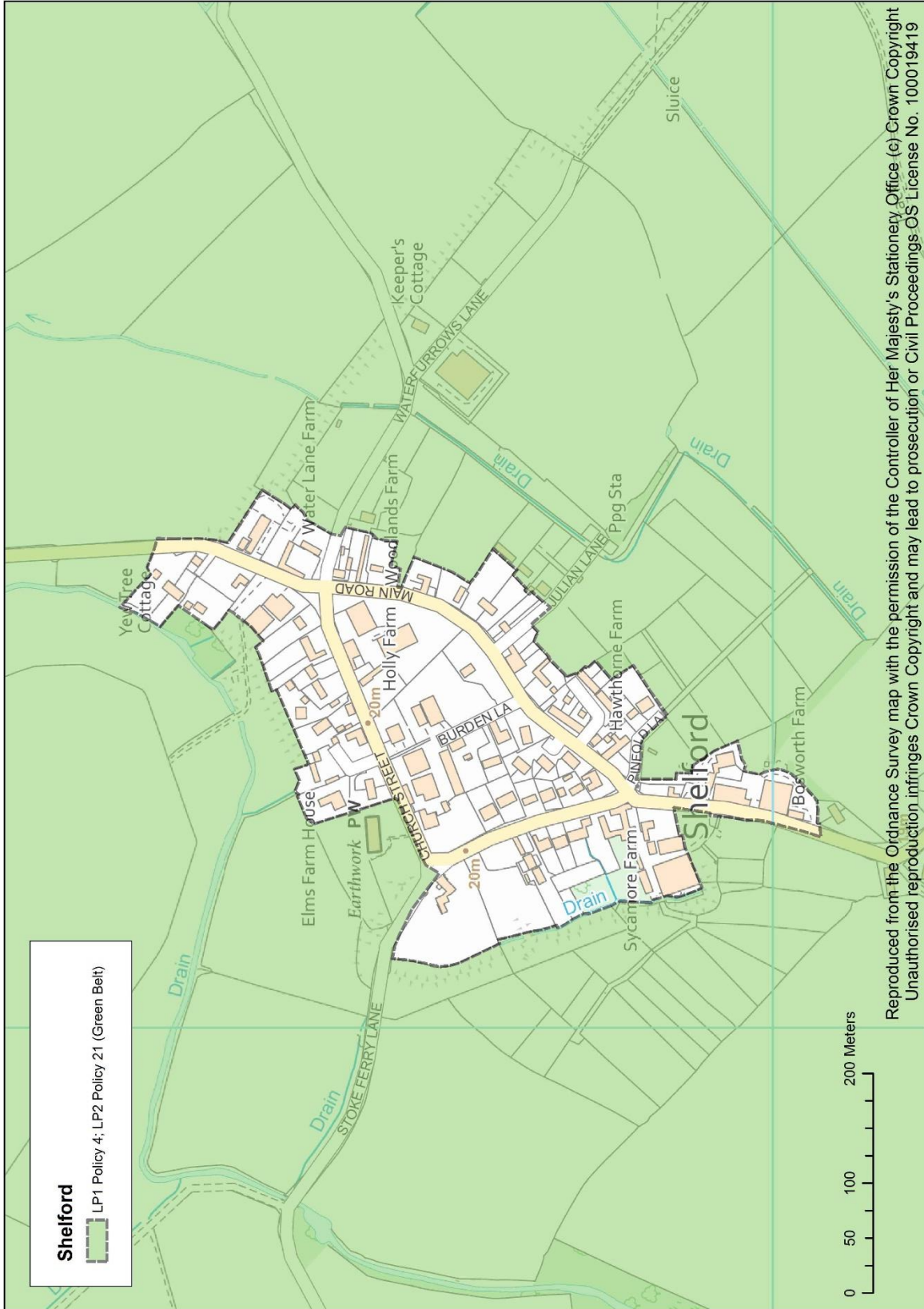
Reproduced from the Ordnance Survey map with the permission of the Controller of Her Majesty's Stationery Office (c) Crown Copyright  
 Unauthorised reproduction infringes Crown Copyright and may lead to prosecution or Civil Proceedings OS License No. 100019419





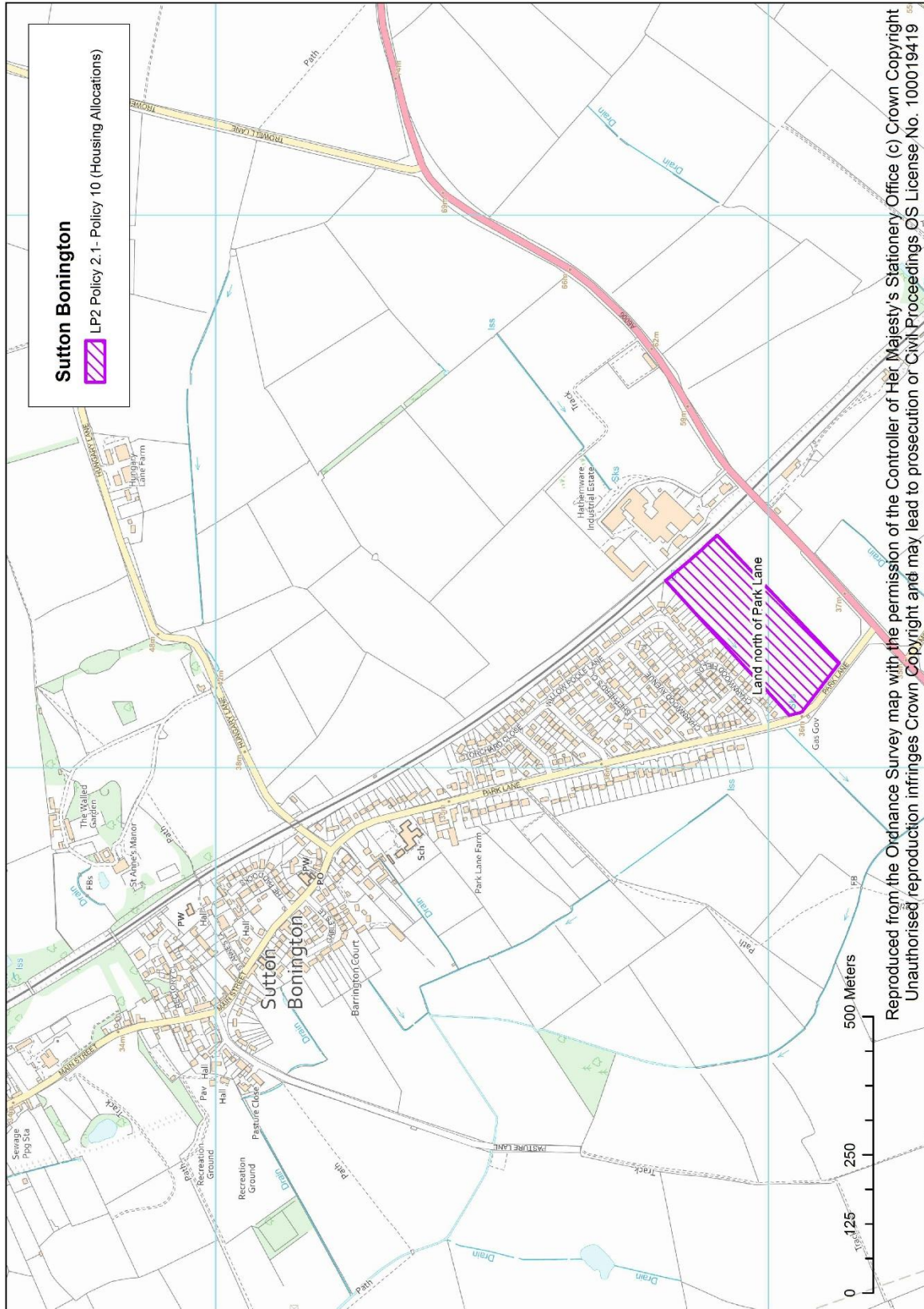
Reproduced from the Ordnance Survey map with the permission of the Controller of Her Majesty's Stationery Office (c) Crown Copyright  
 Unauthorised reproduction infringes Crown Copyright and may lead to prosecution or Civil Proceedings OS License No. 100019419

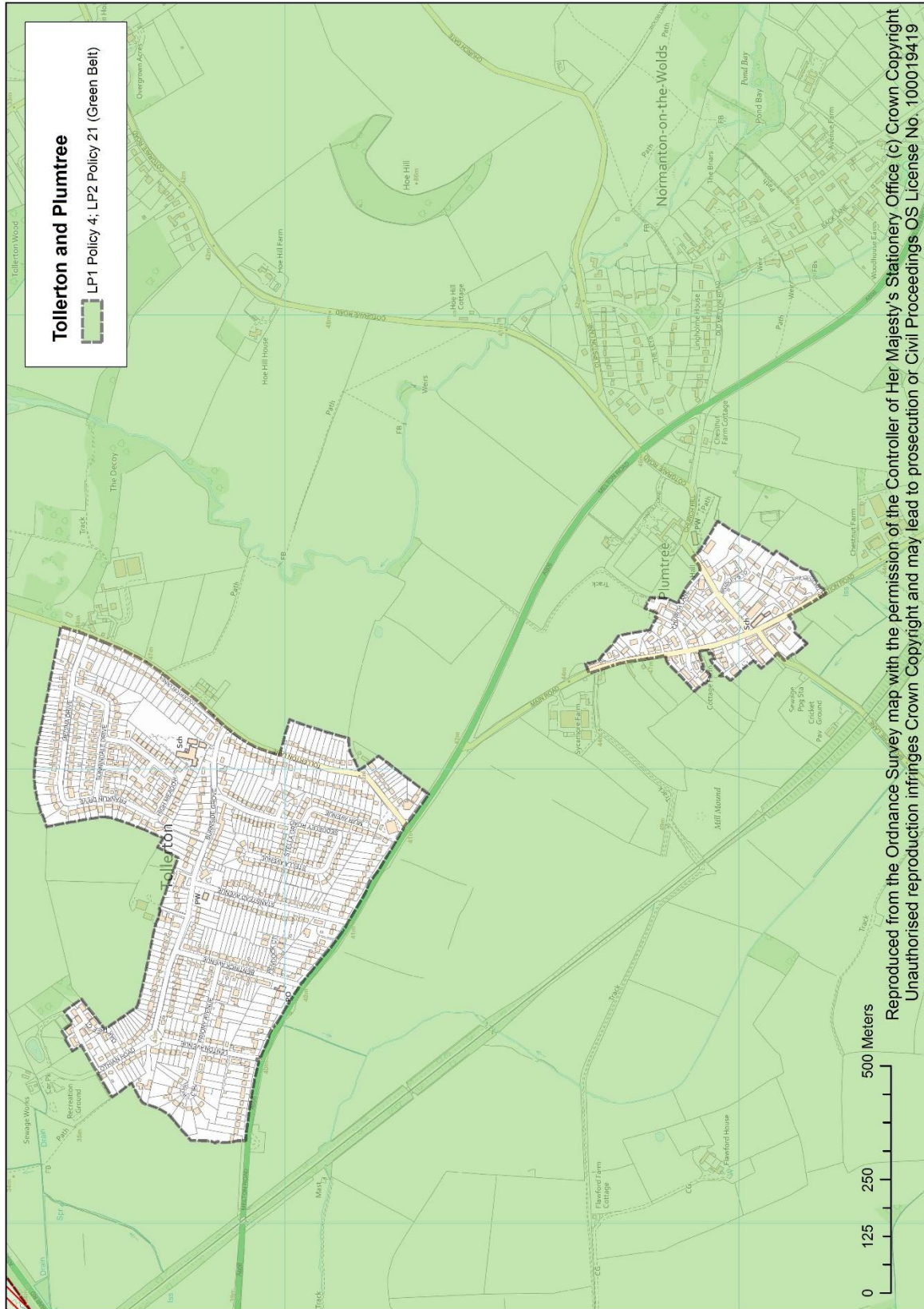


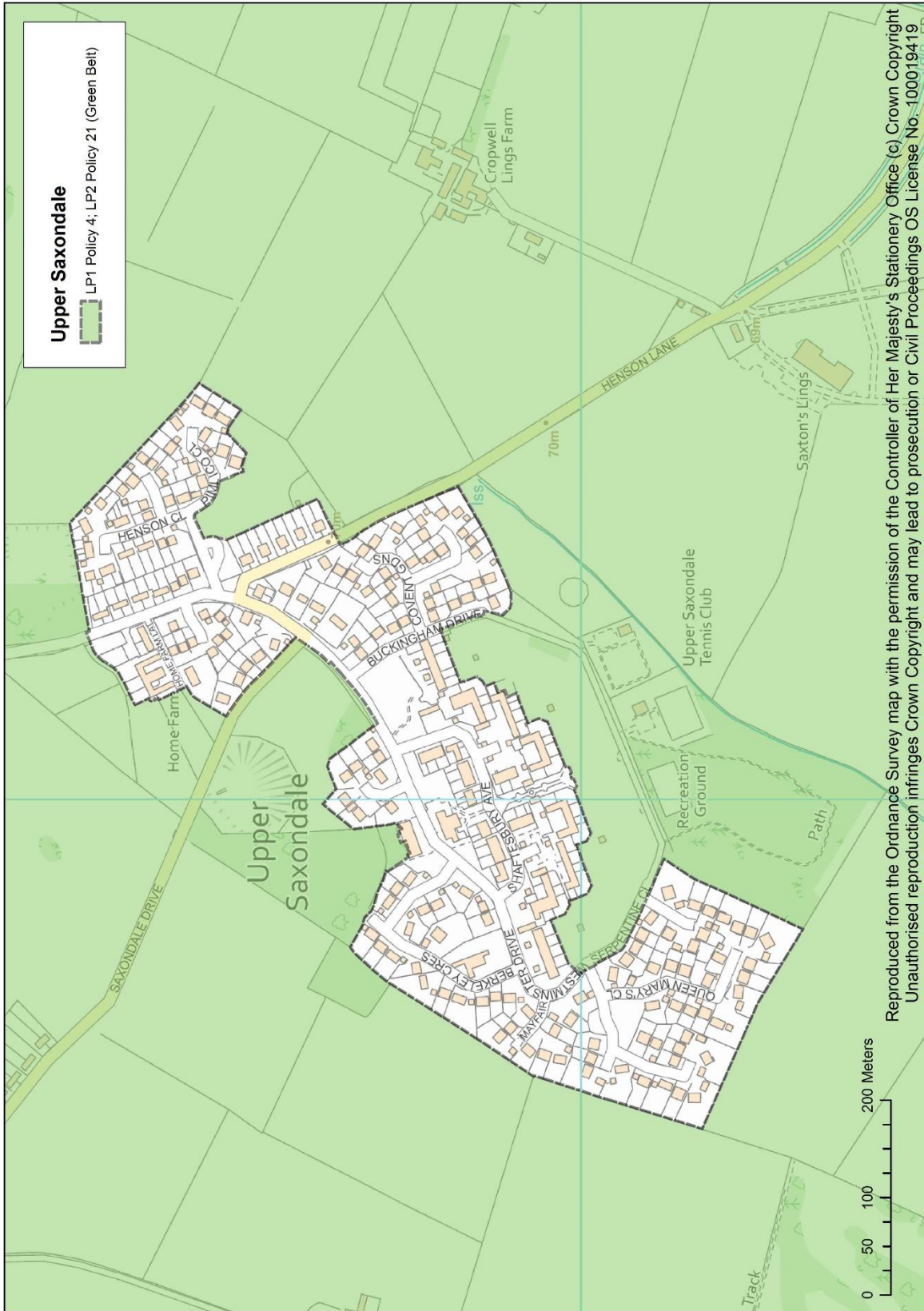


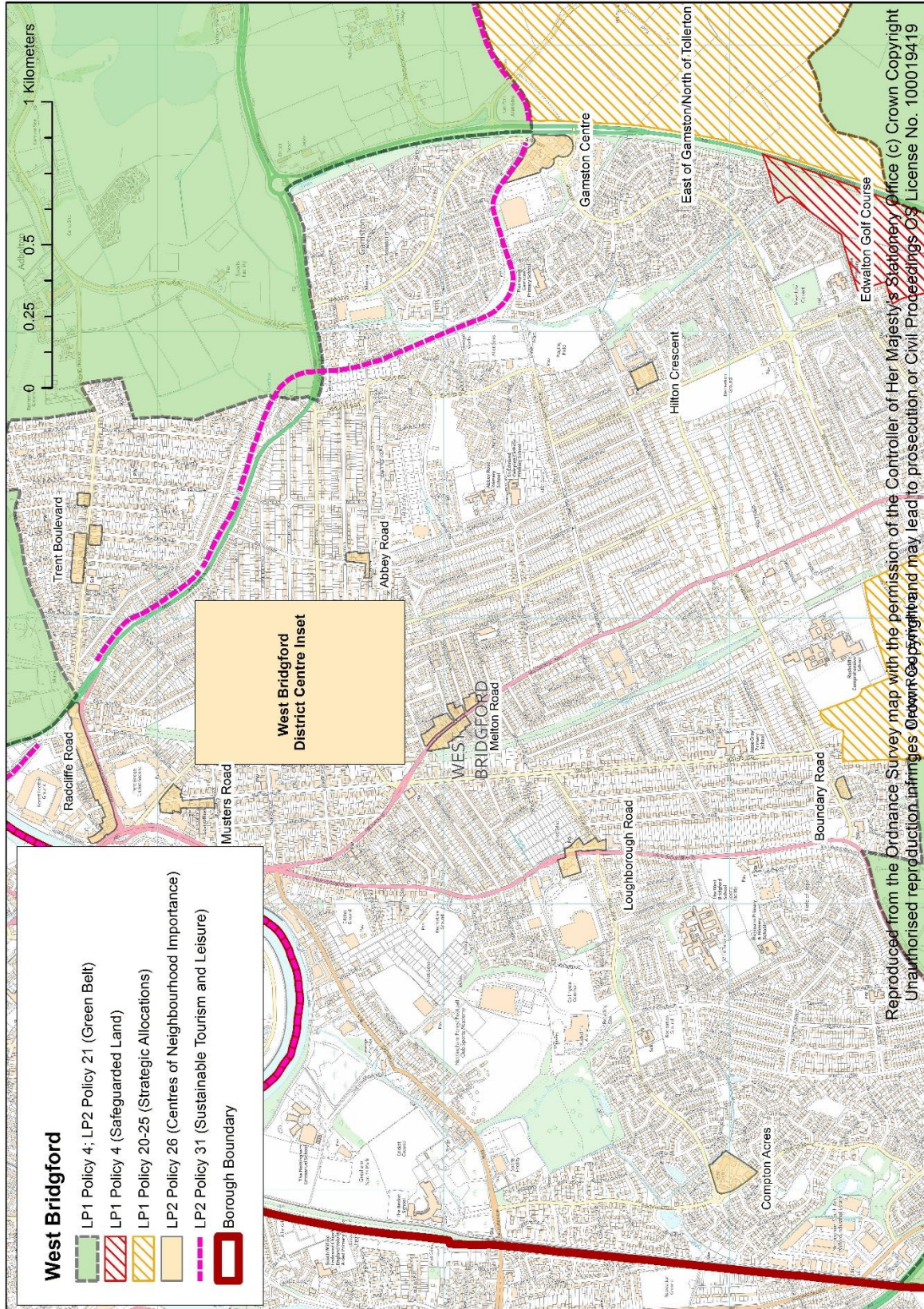
Reproduced from the Ordnance Survey map with the permission of the Controller of Her Majesty's Stationery Office (c) Crown Copyright  
 Unauthorised reproduction infringes Crown Copyright and may lead to prosecution or Civil Proceedings OS License No. 100019419



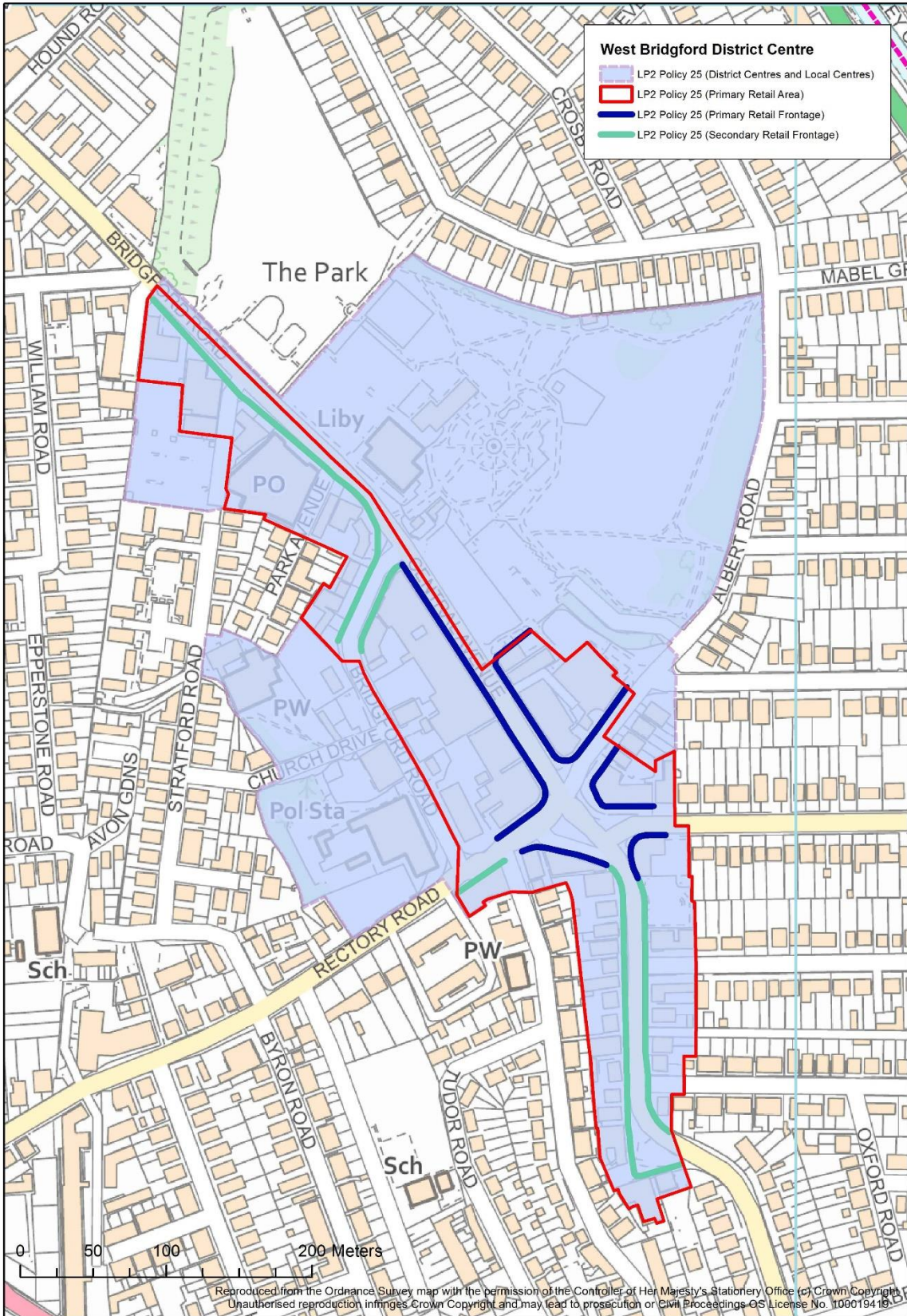


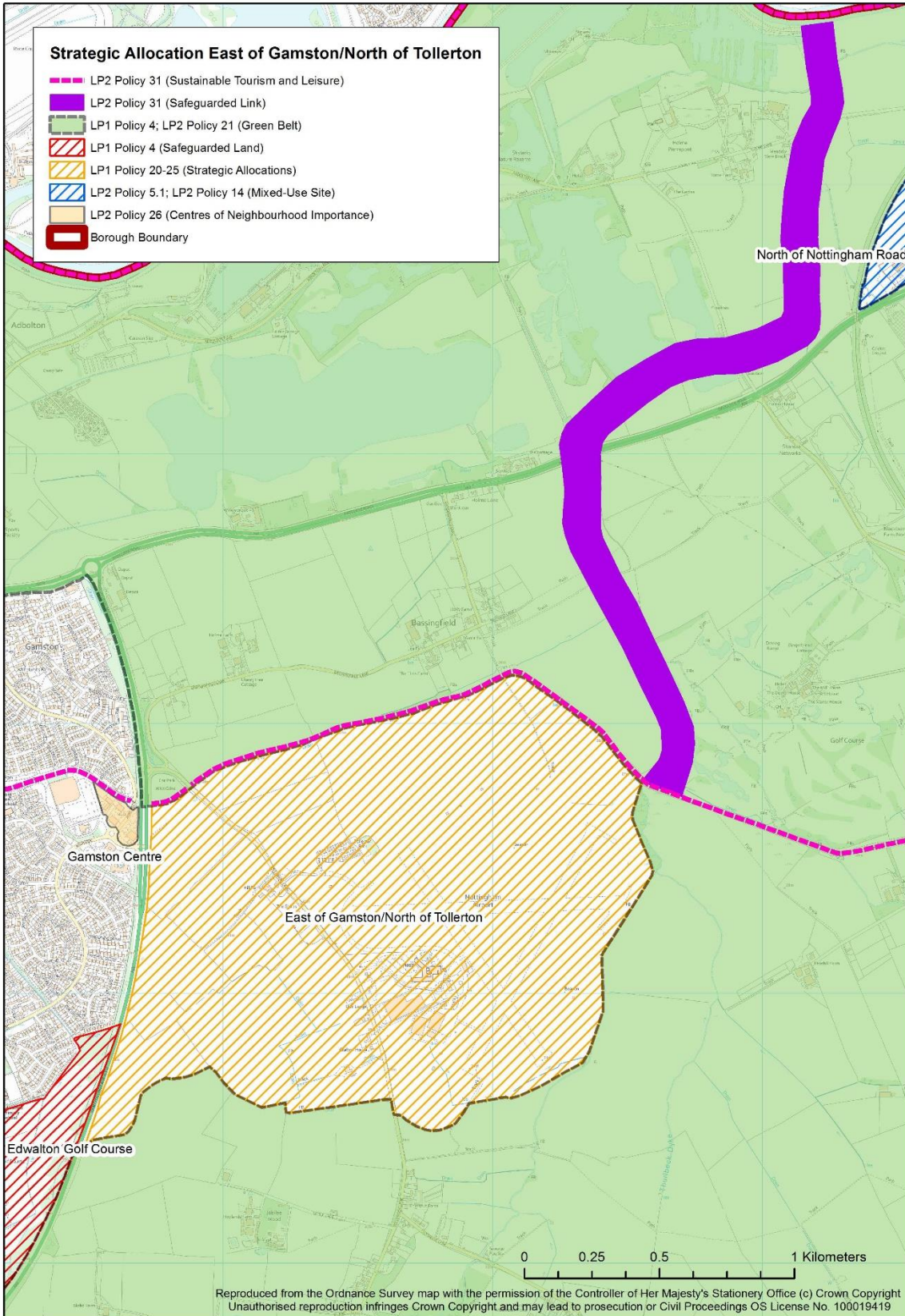


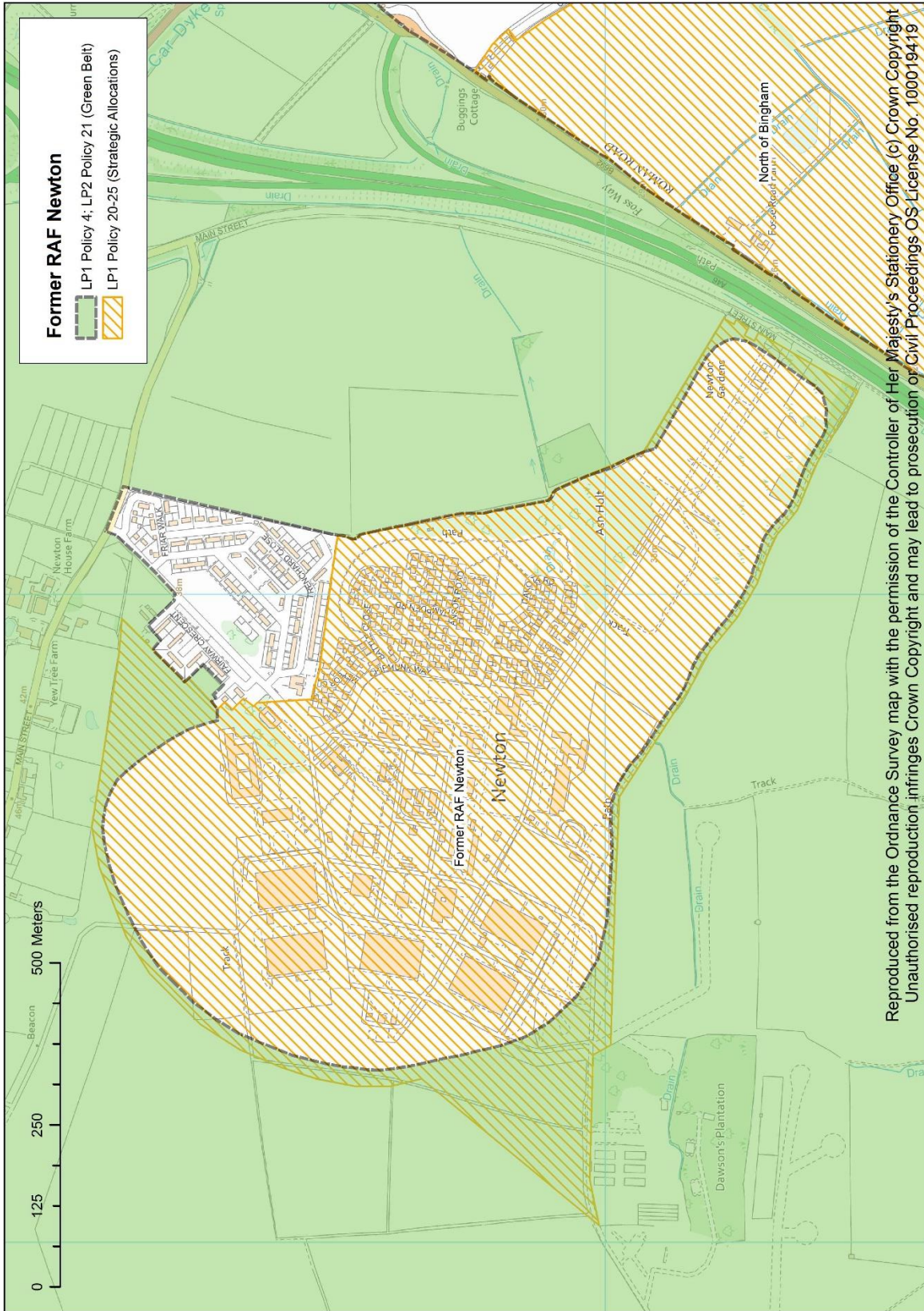




Reproduced from the Ordnance Survey map with the permission of the Controller of Her Majesty's Stationery Office (c) Crown Copyright  
 Unauthorised reproduction infringes copyright and may lead to prosecution or civil proceedings OS License No. 100019419







Reproduced from the Ordnance Survey map with the permission of the Controller of Her Majesty's Stationery Office (c) Crown Copyright  
 Unauthorised reproduction infringes Crown Copyright and may lead to prosecution or Civil Proceedings OS License No. 100019419

