



Rushcliffe Nature Conservation Strategy Implementation Group

The Nature of Rushcliffe Annual Report - March 2007

1.0 Introduction

The strategy group was set up in 2003 to implement the Rushcliffe Nature Conservation Strategy and consists of a range of organisations and groups with an interest in Rushcliffe's wildlife. The Nature Conservation Strategy forms part of the Rushcliffe Community Strategy.

Member organisations of the implementation group are:

- Rushcliffe Borough Council
- Nottinghamshire Wildlife Trust (NWT)
- Council for the Preservation of Rural England (CPRE)
- Nottinghamshire County Council
- Nottinghamshire Biodiversity Action Group
- Farming and Wildlife Advisory Group (FWAG)
- British Trust for Ornithology
- Friends of Meadow Park
- Bunny Wood Group
- South Notts Bird Ringers

On 7 October 2003 the Borough Council endorsed the Rushcliffe Nature Conservation Strategy and implementation of the strategy began from April 2004. The actions are to be carried out by a range of organisations including those on the implementation group.

The strategic aim is to protect and enhance Rushcliffe's wildlife resources, thereby contributing towards local and national biodiversity action plan targets. The strategy aims to provide easy access to wildlife-rich green spaces, with an emphasis on species-rich grassland, woodland, wetland habitats and Biodiversity Action Plan species.

2.0 Progress

The third year has seen the extension of work initiated in previous years. Additional projects have also started to be developed:

2.1 Community Ranger Service

Nottinghamshire Wildlife Trust has continued to work across the borough.

A report from the wildlife trust is attached at Appendix C.

2.1 Rushcliffe Pond and Wetland Grant

A grant for one wetland restoration scheme, totalling £532.18, has been paid this year.

2.2 Rushcliffe Nature Conservation Support Grant

Grants to two groups in Rushcliffe, totalling £355.63 have been paid this year.

2.3 Agri – Environment Schemes

A farmer and rural business information and advice event was held at Bingham on 16th November 2006.

2.4 Blue Butterfly Scheme

Work was carried out in July and August to create a wildflower meadow at Collington Common in West Bridgford.

2.5 Bingham to Melton Wildlife Corridor

The project continued with a volunteer visiting all farms along the corridor, those who were interested were identified and visits by farm advisors (FWAG and NWT) are being carried out.

3.0 Completed Work

3.1 Edwalton Golf Course managers have been given advice, on ways to improve the biodiversity value of the course and this has been incorporated into their environmental management system.

3.2 Nottinghamshire Wildlife Trust has developed a management plan for Meadow Covert, which is now being implemented.

3.3 The environmental subgroup of the Grantham Canal Partnership has commissioned an assessment of the ecological impact of restoration; this is nearly completed by the consultants.

3.4 Investigations into the control of mink in the Rushcliffe area showed that they are widespread within and around Rushcliffe. It was felt there was little opportunity to control mink in Rushcliffe alone and that any action would need to be taken over a larger area. This is outside the remit of this group, therefore at present no further action will be taken.

3.5 A new leaflet on gardening for urban wildlife has been published

4.0 Other Ongoing Work

- 4.1 Agreement with British Gypsum has not yet been made over future management of Gotham Hill Pastures SSSI. Natural England (the successor to English Nature) is continuing to work on this.
- 4.2 Recruit leaders and establish South Nottinghamshire Wildlife Watch groups.
- 4.3 Develop a public conservation training programme.
- 4.4 Approach landowners with designated Sites of Interest for Nature Conservation (SINCs) to explain the site's interest and discuss the site's management.
- 4.5 Develop conservation management plans and carry out work at Sharphill Wood, Green Line, The Hook and Gresham Marsh
- 4.6 Continue work at Meadow Covert and seek Local Nature Reserve status
- 4.7 Plans to widen the A46 have been suspended for financial reasons, when they resume we will seek to influence the Highways Agency over the environmental impact of the proposals.
- 4.8 Continue to assist the Grantham Canal Partnership in developing ecologically sound plans, via its environmental subgroup.

5.0 Key actions for 2006-2007

- 5.1 Input to the development of the Rushcliffe Local Development Framework (the replacement to the Local Plan)
- 5.2 Seek funding for expanded farms work in Rushcliffe and support the provision of a county wide SINC Maintenance Grant.
- 5.3 Work with Nottinghamshire Biodiversity Action Group to develop a county-wide conservation training programme, covering Rushcliffe.
- 5.4 Arrange site visits for RBC officers/staff and members to nature conservation sites in Rushcliffe.
- 5.5 Run a farm and rural business advice event
- 5.6 Hold a seminar on planning and conservation.
- 5.7 Hold a training workshop on management of amenity land for wildlife.
- 5.8 Carry out a public pond survey.
- 5.9 Identify sources of 'local provenance' trees and encourage their use through the Parish Planting and Landscape Scheme and in development schemes.
- 5.10 Promote the planting of black poplars in Rushcliffe
- 5.11 Assist Nottinghamshire County Council in developing an improved road verge management policy.

6.0 Chairman's Statement

Probably the most significant limiting factor on taking the strategy forward is that of resources, both in terms of time and money. Most people who have a real interest in conservation in Rushcliffe are already involved in projects and activities, which makes priming new projects difficult and because Rushcliffe is classed as a generally affluent area, which also makes bringing in extra funding difficult, most bids have a social component.

Nonetheless there is a lot of work going on in nature conservation around Rushcliffe

- Almost all the reserves in Rushcliffe have a significant volunteer component in their operation; in most cases this includes some form of work party.
- Through the Community Wildlife Ranger funding Meadow Covert Wood and Sharphill Wood are now being actively managed and there are also plans to manage a number of grassland sites owned by Rushcliffe under the Blue Butterfly scheme, as well as creating a new wildflower meadow at Collington Common near Rushcliffe Arena.
- In the last year three reserves have had open days, whilst there has also been an annual programme of site and special interest visits around the borough (dawn chorus, dragonflies, waterfowl, wildflowers etc), plus a programme of winter talks.
- The WATCH group at Rushcliffe Country Park recovered from a change of leadership and its contribution to the area was recognised in the Rushcliffe Community Partnership Environmental Awards.
- The Rushcliffe Barn Owl Project continues to steadily pursue its objective and in the past 5 years has provided accommodation for a significant number of Barn Owl chicks. This work has also been recognised by the Community Partnership.
- Several reserves and local groups have web sites and/or newsletters. In addition one local enthusiast writes a monthly local wildlife article for the Rushcliffe Local News.

However the year has not been without its problems.

The biggest blow was the loss of much of the Ruddington Station SINC to a housing development despite opposition from RBC and NWT. On the other hand a major housing development adjacent to Sharphill Wood was abandoned after a Public Inquiry (although not because of any consideration of the wood), along with the proposals for the remaining open land becoming permanent open green space. However with the threat to build an extra 11,000 houses in Rushcliffe by 2020, it remains a real possibility that houses will be built there at some point and there is genuine concern that the increased housing pressure may result in more houses on the site and less open space. An alternative proposal to use Cotgrave Colliery for houses neatly illustrates the dilemma for nature conservation, loss of the colliery site would threaten a Reedbed (a rare habitat in Nottinghamshire) and several rare plant species of county

or national importance, in fact given the sort of housing numbers in prospect it seems likely that both sites could be targeted.

A very different problem was threat of disease to Ash trees particularly where the trees over hung roads, this led to a genuine concern that ash trees might largely disappear from our local hedgerows, cut down for road safety reasons. Again this brought into sharp relief the conflicting pressures that public bodies can come under, on the one hand to preserve trees that are part of our landscape and at the same time maintain road safety. In the end a policy was devised by the County Council in negotiation with other parties which should see matters dealt with in a case by case method, which should hopefully mean that only really dangerous trees are removed, whilst others at less risk are managed in a less severe way.

For years the management of Fairham Brook has been of concern, however recent legislation has obliged the Internal Drainage Board to look at its policies and integrate nature conservation into its activities. Through their management organisation (JBA Consultants) they are now looking at creating a Biodiversity Action Plan, along the length of Fairham they are responsible for, that is integrated into the Brook management plan. As part of this process they have convened a working group that includes various interested local parties. It remains to be seen whether this will deliver a more wildlife friendly management regime and ultimately a better environment along the brook.

For the coming year I hope that business as usual will be maintained in delivering the current level of practical conservation on the ground, but in addition it will be good to see progress in various long term projects that are in hand or are currently evolving

- Gotham Pastures
- Bingham to Melton Wildlife Corridor
- Grantham Canal Environment Sub Group
- Fairham Brook Biodiversity Action Plan

Oh yes and a solution to that great conundrum how to get more resources and more recruits!



Gordon Dyne


Chair - Rushcliffe Nature Conservation Strategy Implementation Group

Appendix A Indicators of Achievement


As part of the strategy, ten indicators of achievement have been selected to measure the success of the strategy. Listed below are each of the indicators with the results for the year from April 2005 to March 2006.

Key


Improving 

No change / no previous data 


Deteriorating 

1. % of nature reserves with management plans (as listed in Appendix B). Target = 100% sites 

As of April 2006 there are twenty two nature reserves, sixteen of these sites have current management plans.

2. Number of man hours of voluntary work carried out on nature reserves. Target = Increase year on year 


In the year January 2005 to December 2005, the estimated number of hours of voluntary nature conservation work carried out in Rushcliffe was 5188 hours. Last year's voluntary work was 6143.5 5 hours.

3. % of nature reserves with public events (at least once per year). Target = 100% 


Of the twenty two sites (listed in appendix B), two do not have open public access. Public events were held on 14 of the nature reserves.

4. Number of Local Nature Reserves, Target 66 LNR across borough by 2066 (i.e. 1 per parish and West Bridgford borough wards), milestones = 10 by 2010. 

No new local nature reserves were designated in 2006. The accessibility of 'green' sites in Rushcliffe is shown in Appendix G

5. % of SSSI units in favourable condition. Target = 100%. 

In Mar 2007, 38% of Sites of Special Scientific Interest (SSSI) units were in favourable condition. Barnstone Railway Cutting SSSI has changed from 'Unfavorable, declining' to 'Unfavorable, recovering', A unit at Wilwell Cutting has changed from 'favorable' to 'Unfavorable, recovering'. Full results are shown in Appendix E

6. No of SINCS. Target = No net loss. 

The number of SINCS notified in Rushcliffe has decreased from 202 to 199, however the decrease in reality is worse as 3 existing SSSI's that had not

previously been notified as SINC's have now been notified. Overall there have been 5 losses and 3 gains.

Loses = Burton Meadows Loop, Cropwell Bishop Grassland, Foss Way Verge - Willoughby, Marsh below Brandshill, St. Marys Churchyard - Colston Basset,

Gains = Kinoulton Grassland II, River Soar - Sutton Bonnington to Normanton (x2)- this has been significantly increased

SSSI's not previously notified as SINC's = Kinoulton Marsh, Normanton Pastures, Rushcliffe Golf Course

7. No. of Agri-Environment Schemes. Target = 50% of all agricultural holdings.



87 Environmental Stewardship Agreements were made in Rushcliffe during 2006; of these 3 were Organic Entry Level Agreements and 1 Higher plus Entry Level, the rest are Entry Level. The total number of agreements by December 06 is 184 (Source www.magic.gov.uk). A number of Countryside Stewardship Agreements are still continuing. The area covered by agreements is well above 50%, increasing the number of 'Higher Level' agreements is now the priority.

8. Schools with wildlife areas. Target = 25%.



We are aware of sixteen schools in Rushcliffe that have school nature areas, out of forty nine or 33%. There may be other schools with nature areas of which we are unaware.

9. Ratio of barn owl young raised in barn owl boxes. Target = Sustain barn owl numbers



The ratio of average young to the number of barn owl boxes has increased from 2005 to 2006. Full results are shown in Appendix F. This shows that the habitats required for barn owls' food sources are available in addition to the availability of nest boxes.

10. % of nature conservation actions completed by completion date. Target = 100%



Three new actions were due to be completed during 2006. Two of these have been completed. Full details are shown in Appendix H.

Appendix B Nature Reserves

This is the list of nature reserves in Rushcliffe which is used for the basis of this report. This replaces Appendix 1 of the Rushcliffe Nature Conservation Strategy.

Bingham Linear Walk (SINC). A 2½ km disused railway track that has been taken over by wildlife. Woodland and grassland habitats are home to wildflowers and butterflies. The main entrance is on Nottingham Road, Bingham. The site is owned and managed by Bingham Town Council. †

Bunny Old Wood (SINC). A 16 ha ancient deciduous woodland with animal and flower interest. Managed by Nottinghamshire Wildlife Trust. †

Cotgrave Country Park (SINC). Developed on part of the old colliery, extensive tree planting has been carried out, and there are lakes and a restored section of the Grantham Canal. Owned by Nottinghamshire County Council. †

Fishpond Wood, Owthorpe (SINC). Private woodland containing medieval fishponds. The owner allows informal public access. †

Grantham Canal (part SSSI, part SINC). This disused canal runs from the River Trent near Lady Bay Bridge through to Grantham. Most of the canal has had the towpath restored and can be walked or cycled along. Many parts are important for a wide range of wildlife.

Green Line, West Bridgford (SINC). An attractive stretch of urban disused railway, vegetated by scrub and grassland. The line runs from Boundary Road to Melton Road, West Bridgford. Owned by Rushcliffe Borough Council.

Gresham Marsh (SINC). A 4 ha area containing a mixture of marshland and degraded species rich grassland. This site is owned by the Environment Agency, who, assisted by Nottinghamshire Wildlife Trust, are looking to manage this as a nature reserve.

Keyworth Meadows (SINC, LNR). Owned and managed by Keyworth Parish Council, the meadow covers about 2ha and contains species-rich grassland, with small wetland areas associated with the Fairham Brook. Over 80 species of wildflower have been recorded, plus a wide variety of butterflies, dragonflies and amphibia. †

Holme Pierrepont Country Park (part SINC). A 270-acre country park, dominated by the lake which is used for water sports, but also including areas of woodland, small ponds and grassland. Part of the National Watersports Centre, a Sports England site managed by Leisure Connections.

Meadow Park, East Leake. Owned by Rushcliffe Borough Council this a meadow of varying quality with the Kingston Brook running through it and is being managed for amenity and nature conservation. †

Meadow Covert Wood. Owned by Rushcliffe Borough Council, a small area of woodland in Edwalton, now completely enclosed by development. The site is adjacent to the Edwalton Primary School site. †

The Nature of Rushcliffe 2006

Rushcliffe Country Park. A large park, with 36 hectares devoted to wildlife habitats. It contains areas of tree planting and grassland, plus a small lake and bat cave and barn owl boxes. Owned and managed by Rushcliffe Borough Council. †

Sharphill Wood, Edwalton (SINC). Mature mixed broadleaf woodland with plant and animal interest. Owned by Rushcliffe Borough Council. †

Skylarks, Holme Pierrepont (SINC). Owned by Tarmac, managed by Nottinghamshire Wildlife Trust, this 10 ha site is a disused gravel pit surrounded by scrub woodland. The nature of the site is good for wildfowl, dragonflies and amphibia, but also contains orchids and other wildflowers. †

Springdale Wood, East Bridgford. A new native woodland, off Springdale Lane, planted on farmland in 1999. Owned by the Woodland Trust. †

Stonepit Plantation (SINC). Owned by West Bridgford Scouts, this woodland site is managed by a small group of volunteers and used by local scout groups.

Sutton Bonington Meadow and Spinney (LNR). A 4 ha site containing grassland, woodland, a dyke and a pond. Ridge and furrow patterns can be seen in the meadow. Adjacent to the River Soar. Owned by Sutton Bonington Parish Council. †

The Hook, Lady Bay. Meadow and recreational area alongside River Trent. Owned by Rushcliffe Borough Council.

Wilford Claypits (SSSI). A 4 ha site managed by Nottinghamshire Wildlife Trust on behalf of Rushcliffe Borough Council, it is surrounded by development. The area contains permanent shallow pools, making the site good for dragonflies and amphibians. The surrounding grassland contains over 80 different species of flower. †

Wilford Hill Wood (SINC) - a small 3 ha piece of old woodland on the edge of West Bridgford. Nottinghamshire Wildlife Trust manages the site on behalf of the owner. The site contains a range of woodland flowers. †

Willoughby Wood, Willoughby on the Wolds. A new native woodland planted on farmland in 1999. This site has a wildlife pond and ridge and furrow patterns. Access from Bryans Lane, off Main Street. Owned by the Woodland Trust. †

Wilwell Farm Cutting - (SSSI, LNR) an 8 ha site managed by Nottinghamshire Wildlife Trust on a 99-year lease from RBC. It is a prime wildflower site, with over 130 species recorded. It is an abandoned stretch of the Great Central Railway with a mixture of species-rich grassland, marsh areas and scrub woodland, plus a limestone based habitat along the old trackbed. Access is from the B680 between Ruddington and Wilford. †

† Sites with current management plans

Nottinghamshire

Wildlife Trust



Community Ranger Service – Rushcliffe Borough Council Progress Report – October 2006

1a Continue to provide land owner advice to ensure biodiversity protection and enhancement in the Borough.

- Conservation Officer made 17 separate visits through the year to farmers and landowners, many of those visits including practical actions such as the erection of owl boxes and seed hoppers.
- Significant time this year has been spent on strategic planning work with officer time spent on consulting on the development of the Local Plan in addition to the ongoing monitoring of planning applications in the Borough.

1b Look to target the following sites for management plans: Green Line, identified as high priority level 1, The Hook, identified as high priority level 1. If any of these sites are not suitable Stonepit Plantation will be worked on instead.

- Meadow Covert Management Plan is now complete.
- Vegetation Surveys completed to inform management brief for Greenline.
- Meeting held with friends of group at Stonepit Plantation to establish management needs.

2

- Identify schools located nearest to the Rushcliffe Sites and link them to activities or potential involvement taking place there e.g. Manvers School linked to Cotgrave Country Park, Ladybay Primary linked to The Hook.
 - Assist in the promotion of the Eco-Schools initiative and Watch School membership.
 - Develop knowledge of small grant schemes available for schools to pay for the development of small nature areas.
- iv.** Use the Web to promote activities to Rushcliffe Schools.
- Seven separate schools received a number of visits and advice. Wherever possible schools are encouraged to use local green space, e.g. St Peters to Rushcliffe Country Park and Brookside Primary to Bunny Wood. Four of these schools are being assisted in the development of Small Nature Areas within the grounds. The Education Officer now has more knowledge of the grant schemes available to support schools work in this area including RBC Pond Grant Scheme, BBC Breathing Places and Woodland Grant Scheme.

- Our Education Officer continues to liaise with the County Council and Eco-schools are promoted to all schools worked with.
- Wildlife Watch group meets every month at Rushcliffe Country Park. This group is proving very successful with an extra leader recently recruited and between 12 and 15 children attending each month. Manor Farm has affiliated to the scheme to support more educational visits.
- Support was given to Cotgrave Country Park Friends group and an out of school hours club and significant work to develop curriculum linked activities and support materials for schools, particularly in relation to Maths.
- Development work has begun to link schools to Cotgrave Country Park.
- New education leaflet in development.

3a Reinvigorate/ establish friends groups at Sharphill Wood, Meadow Covert, The Greenline and The Hook.

3b Organise / co-ordinate volunteer work parties at Sharphill Wood, Green Line, Meadow Covert and the Hook

- Work has begun in this area with posters and information being distributed. There has been some success in recruiting small numbers of volunteers but more momentum is needed to realise the full potential of regular working parties. The winter work programme will provide increased opportunities to promote and recruit more volunteers.
- At Sharphill Wood work was delayed due to a planning application to build on land adjacent to the Wood. Strong local feeling against the planning application generated both positive and negative press coverage for the Wildlife Trust, but it did also serve to raise local awareness of the existence of the wood and people interested in helping to manage it. Three work days are planned for October and November with further work planned for later in the winter work season.
- Following the successful award of a pond grant Meadow Covert now has a new pond, bog area and dipping platform installed during local community work days in March and June. Further site visits have identified a winter programme and some interest from local residents has been received. Access to the site is very restricted during school holidays.
- At The Greenline two work days have been arranged for November and opportunities to get involved, promoted to the local community to try to encourage younger members to join the existing friends group.
- Work at The Hook has been postponed until the Environment Agency have completed their flood defence works. Although the preparatory work is underway it is still unclear what the final works will include and therefore how volunteers might be able to engage with the site.

3ci Continue to provide a conduit between local residents and agencies - liaise with them over issues affecting sites with wildlife interest.

Wherever possible NWT officers used their knowledge to link landowners and local

community groups with other relevant networks and organisations in Rushcliffe.

Please refer to the reporting digest for more details.

3cii Undertake a residents survey to establish the level of local knowledge about nature conservation and their local wildlife sites.

The possibility of including some questions on the natural environment in the annual RBC Residents Survey is still to be explored.

3d Events on sites with no previous activity

11 events took place on sites not regularly used including Keyworth Meadows, The Hook, Stonepit Plantation, Sutton Bonington Meadow and the Grantham Canal.

The events programme of the South Nottinghamshire Local Group continues to generate a significant amount of interest in the Borough with woodland walks and wildlife talks being particularly popular.

Events at new sites were:

March 06 – Meadow Covert walk and activities day

14th May 06 – Stonepit Plantation guided walk

May 06 – Guided walk around the Green Line.

PR and Awareness raising activities possibly including leaflet drops, NWT Newsletter, Local Press, Rushcliffe Reports, What's On Website (RBC).

- South Notts Local Group continues to promote their walks and talks programme to a wide audience including NWT members, using leaflets, posters and local press. The programme has grown to include many more sites in Rushcliffe. Both NWT and SNG web sites are kept update with the latest news and events.
- The Group have attended more than 12 local events in the last year in addition to their own walks and talks programme, helping to raise awareness of nature conservation in Rushcliffe.
- Significant press and media work took place over the summer of 2006 in response to strong local feeling regarding a planning application to build housing immediately adjacent to Sharphill Wood. A series of press releases, articles and attendance at local meetings aimed to raise awareness of how NWT work with local authorities and engage with the planning system to make as many gains as possible for wildlife in the County.
- Fundraising undertaken by the South Notts Local Group successfully secured funds for a new marquee and display board to assist them at events. The group is currently seeking a sponsor for their programme leaflet and has approached nine local companies so far.

Appendix D Voluntary practical nature conservation work carried out in Rushcliffe

Jan 05 – Dec 05

Site	Estimated Voluntary Work (man hours)
Bingham Linear Park	252
Bunny Wood	316.5
Cotgrave Country Park	Details not received, assumed 0
Fishpond Wood, Owthorpe	Assumed 0
Gotham Hill Pasture	Assumed 0
Grantham Canal	Assumed 0
Green Line – West Bridgford	37.5
Holme Pierrepont Country Park	Assumed 0
Keyworth Meadow	100
Meadow Covert	241.5
Meadow Park - East Leake	230
Rushcliffe Barn Owl Project	1000
Rushcliffe Country Park	2329
Sharphill Wood	254.5
Skylarks	132
Springdale Wood	0
Sutton Bonington Meadow and Coppice	Details not received, assumed 0
The Hook	Assumed 0
Tree Wardens	Assumed 0
Wilford Clay Pit	127
Willoughby Wood	0
Wilwell Cutting	168
Total Hours 5188	

Value for this work based on Countryside Agency, Market Towns grants (2003) for voluntary unskilled labour at £6.50 per hour £33,722.00

Please note:

1. These figures do not include educational work such as talks, open days, guided walks etc.
2. These figures are for main nature conservation sites only – other smaller projects will have occurred.

Appendix E Condition of SSSI's in Rushcliffe (as assessed by Natural England)

The number of SSSI's in Rushcliffe is 8, however these are split into units which have been individually assessed.

Key

Red	Unfavourable condition and declining
Pink	Unfavourable condition with no change
Yellow	Unfavourable condition but recovering
Green	Favourable condition

SSSI name	Main habitat	Unit area (ha)	Assessment at Feb 2005	Assessment at Jan 2006	Assessment at Mar 2007
Barnstone Railway Cutting	Calcareous grassland - lowland	1.52	Unfavourable, declining	Unfavourable, declining	Unfavourable, recovering
Gotham Hill Pasture	Calcareous grassland - lowland	7.39	Unfavourable, recovering	Unfavourable, recovering	Unfavourable, recovering
Gotham Hill Pasture	Calcareous grassland - lowland	1.05	Unfavourable, declining	Unfavourable, declining	Unfavourable, declining
Kinoulton Marsh And Canal	Neutral grassland - lowland	1.65	Unfavourable, recovering	Unfavourable, recovering	Unfavourable, recovering
Kinoulton Marsh And Canal	Standing open water and canals	0.95	Unfavourable, no change	Unfavourable, no change	Unfavourable, no change
Normanton Pastures	Neutral grassland - lowland	9.51	Unfavourable, no change	Unfavourable, no change	Unfavourable, no change
Normanton Pastures	Neutral grassland - lowland	7.04	Unfavourable, recovering	Unfavourable, no change	Unfavourable, no change
Orston Plaster Pits	Neutral grassland - lowland	1.10	Unfavourable, no change	Unfavourable, no change	Unfavourable, no change

The Nature of Rushcliffe 2006

Orston Plaster Pits	Calcareous grassland - lowland	2.49	Favourable	Favourable	Favourable
Orston Plaster Pits	Broadleaved, mixed and yew woodland - lowland	0.51	Not included	Favourable	Favourable
Orston Plaster Pits	Fen, marsh and swamp	0.54	Favourable	Favourable	Favourable
Rushcliffe Golf Course	Calcareous grassland - lowland	13.87	Unfavourable, recovering	Unfavourable, recovering	Unfavourable, recovering
Rushcliffe Golf Course	Broadleaved, mixed and yew woodland - lowland	5.62	Unfavourable, recovering	Unfavourable, recovering	Unfavourable, recovering
Wilford Claypits	Calcareous grassland - lowland	1.42	Favourable	Favourable	Favourable
Wilford Claypits	Neutral grassland - lowland	0.68	Favourable	Favourable	Favourable
Wilford Claypits	Fen, marsh and swamp	0.08	Favourable	Favourable	Favourable
Wilwell Cutting	Broadleaved, mixed and yew woodland - lowland	2.14	Favourable	Favourable	Favourable
Wilwell Cutting	Neutral grassland - lowland	3.64	Favourable	Favourable	Unfavourable, recovering
Wilwell Cutting	Standing open water and canals	0.97	Unfavourable, recovering	Unfavourable, recovering	Unfavourable, recovering
No of units in favourable condition (total no units in 2006 = 19)			7 out of 18	8 out of 19	7 out of 19

Further details available from <http://www.english-nature.org.uk/Special/ssi/search.cfm>

Appendix F Barn owl results

Year	No boxes at start of year (available for breeding)	No boxes used for breeding	Breeding totals (no. of young birds)	3 year running average of young	Ratio of average young to boxes (average young / boxes)
2000	38	2	4		
2001	62	2	8		
2002	88	4	16	9	0.102
2003	101	9	35	20	0.198
2004	112	10	25	25	0.223
2005	120	18	58	39	0.325
2006	131	20	59	47	0.359

Appendix G Access to Nature

Parishes without Sites of Importance for Nature Conservation (SINCs) 2006

Aslockton
 Hawksworth
 Scarrington
 Shelton
 Sibthorpe
 Thoroton
 Tollerton
 West Bridgford Wards: Abbey
 Lutterell
 Melton

Out of 58 parishes and 8 West Bridgford wards, 10 contain no SINC's

Parishes with publicly accessible nature reserves or public open space managed for wildlife (2006)

Parish	Accessible Green Space
Bingham	Bingham Linear Park
Bunny	Bunny Old Wood
Cotgrave	Cotgrave Country Park and Grantham Canal
Cropwell Bishop	Grantham Canal
Cropwell Butler	Grantham Canal
East Bridgford	Springdale Wood
East Leake	Meadow Park and Manor Farm Animal Sanctuary
Hickling	Grantham Canal
Holme Pierrepont and Gamston	Holme Pierrepont Country Park and Grantham Canal and Skylarks
Keyworth	Keyworth Meadow Nature Reserve
Kinoulton	Grantham Canal
Langar cum Barnstone	Naturescape
Owthorpe	Fishpond Wood and Grantham Canal
Ruddington	Rushcliffe Country Park
Sutton Bonington	Sutton Bonington Coppice and Meadow
Tollerton	Grantham Canal
Willoughby-on-the-Wolds	Willoughby Wood
West Bridgford Wards	Great Central Railway, Gresham Marsh, Greythorne Dyke, Lyme Park, Trentside and Wilford Claypits
Ladybay	The Hook and Grantham Canal
Musters	The Green Line
Trent Bridge	Grantham Canal

Out of 58 parishes and 8 West Bridgford wards, 21 have accessible green space.

Appendix H 2006 Actions

The following actions were to be completed by 2006.

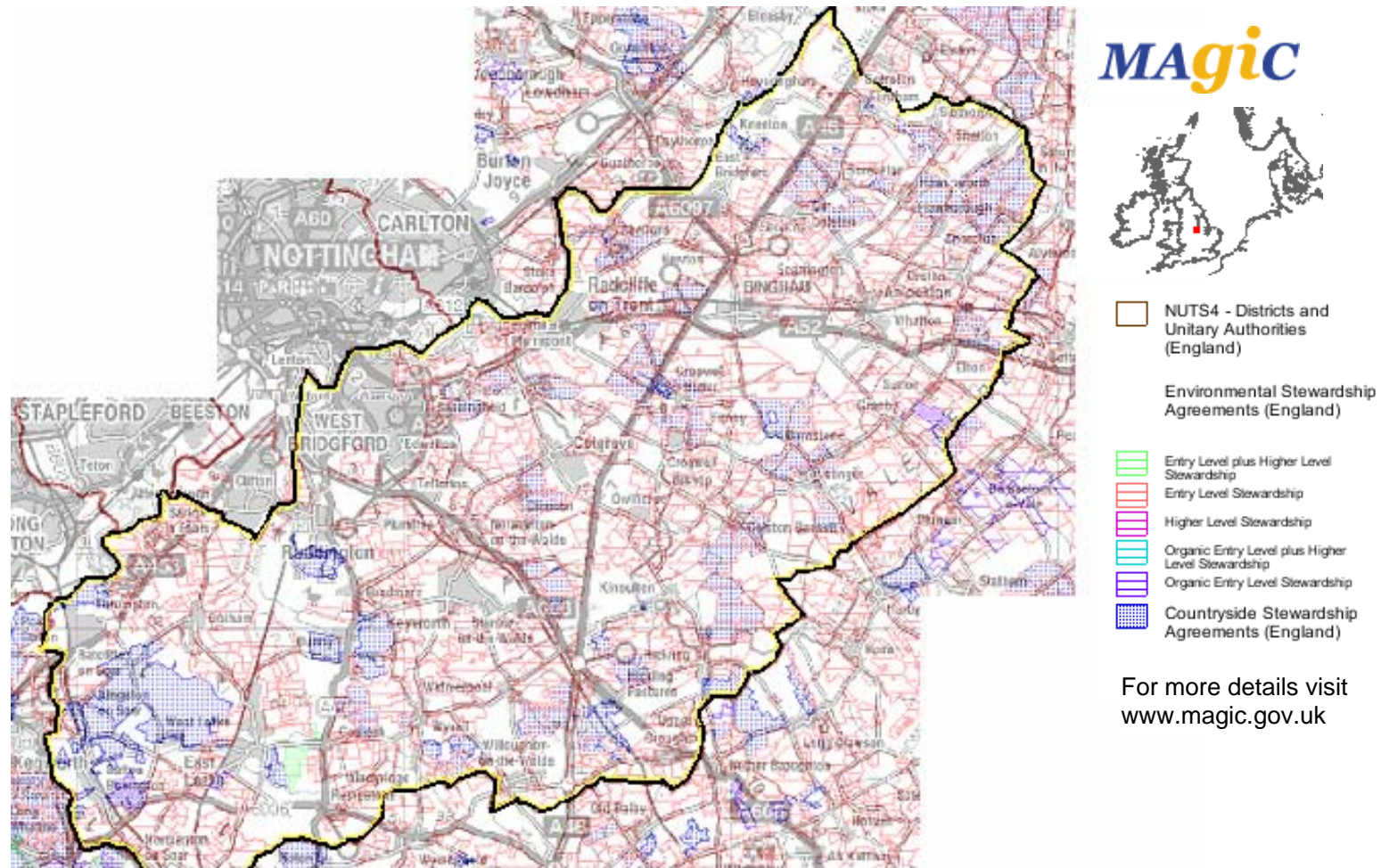
	Action Points	Monitoring	Status
2bi	Re-establish Sustainable Farms Project	It has been decided not to re-establish the sustainable farms project in its original form, in its place are annual Farm and Rural Advice meetings and the Melton – Bingham Corridor Project	Completed
2di	Develop nature conservation policy for The Hook	This was on hold while the Environment Agency plans carried out flood protection works.	Commenced
2diii	Develop nature conservation policy for other playing fields and amenity areas	Three amenity sites are to be managed as 'Blue Butterfly' sites; these are Collington Common, Miss Machins Field and The Hook. Collington Common was seeded with a wildflower seed mixture in Nov 2006	Commenced
2div	Training workshop on management of amenity land for wildlife	This has not yet been pursued, However awareness of management of amenity land for wildlife in the Borough Councils 'Streetwise' service has been raised through the 'Blue Butterfly Scheme'	Not started
2ei	Investigate developing a mink action plan	This was investigated in 2005 and it was decided that no positive action is possible currently	Completed
2hi	Support the development of local nurseries growing local provenance stock	Not yet started	Not Started
4bi	Work with landowners to achieve 5 km of additional rights of way through Stewardship or other agreements	Not yet started.	Not Started
5biii	Create a Watch Group in the Radcliffe on Trent	Volunteer leaders are still being sought	Commenced

The Nature of Rushcliffe 2006

	or Bingham area		
5biv	Seek accommodation for the Wilford Watch Group (for 8 to 14 year olds) monthly meeting	Still being sought, but is also dependant on finding leaders	Commenced
5ci	Commission an account of Rushcliffe's wildlife	The biological records office has been asked to carry out a survey of ponds in Rushcliffe. This survey and subsequent surveys will build up into a comprehensive account of Rushcliffe's wildlife	Commenced

Appendix I Agri-Environment Agreements

The following land holdings had Agri-Environment schemes by April 2007.



Map produced by MAGIC on April 25 2007. (c) Crown Copyright. All rights reserved. Defra 100018880 2007.

Copyright resides with the data suppliers and the map must not be reproduced without their permission.

Some information in MAGIC is a snapshot of the information that is being maintained or continually updated by the originating organisation.

Please refer to the documentation for details, as information may be illustrative or representative rather than definitive at this stage.

For more details visit
www.magic.gov.uk

With thanks to everyone who has helped compile the data for this report, especially Gordon Dyne (NWT Southern Member Group).

Produced by:

Paul Phillips
Environmental Sustainability Officer
Rushcliffe Borough Council

Tel. 0115 914 8595

Email.

environmentalissues@rushcliffe.gov.uk

Write to: Civic Centre
Pavilion Road
West Bridgford
Nottingham
NG2 5FE

Website.

www.rushcliffe.gov.uk/natureconservation