

# Rushcliffe Community Partnership Handbook



# Contents

<b>Introduction</b>	<b>2</b>		<b>Rushcliffe Environmental Partnership</b>
<b>The Strategic Board</b>	<b>3</b>		
<b>The Executive Group</b>	<b>4</b>		<b>Rushcliffe Children and Young People's Partnership</b>
<b>Theme Groups</b>	<b>5</b>		
<b>Rushcliffe Environmental Partnership</b>	<b>5</b>		
<b>Rushcliffe Children and Young People's Partnership</b>	<b>5</b>		<b>Rushcliffe Health Issues Partnership</b>
<b>Rushcliffe Health Issues Partnership</b>	<b>5</b>		
<b>Rushcliffe Stronger Communities Partnership</b>	<b>6</b>		<b>Rushcliffe Stronger Communities Partnership</b>
<b>Rushcliffe Business Partnership</b>	<b>6</b>		
<b>South Nottinghamshire Community Safety Partnership</b>	<b>6</b>		
<b>Jointly funded posts</b>	<b>7</b>		<b>Rushcliffe Business Partnership</b>
<b>Rushcliffe Sustainable Community Strategy</b>	<b>8</b>		
<b>Appendix A</b>	<b>9</b>		
<b>Appendix B</b>	<b>10</b>		<b>South Nottinghamshire Community Safety Partnership</b>

# Introduction

The Rushcliffe Community Partnership is a group of public, private, community and voluntary organisations that work together to improve the quality of life for everyone in Rushcliffe. Partnership working means that more can be achieved than when working alone. Sharing resources, experience and expertise is more cost effective.

The structure of the Partnership consists of a Strategic Board (formerly the 'Local Strategic Partnership'), the Executive Group and six Theme Groups. This handbook provides basic information about membership, structure and responsibilities of the Partnership and outlines how we will help to make Rushcliffe a great place to live.



Rushcliffe  
*Community Partnership*

# The Strategic Board

The Strategic Board provides strategic direction to the Rushcliffe Community Partnership. All Partner organisations are represented on the Board, which meets every three months. The chairman and vice-chairman are

elected annually by the board. Current membership of the Strategic Board and the organisations they represent is shown below.



Councillor  
**Neil Clarke**  
Chairman



**Richard Melanaphy**  
Vice-Chairman  
(Nottinghamshire Fire  
and Rescue)



Superintendent  
**Paul Anderson**  
(Nottinghamshire Police)



**Jonathon Gribbin**  
(Nottinghamshire  
County teaching Primary  
Care Trust)



**Wendy Edwards**  
(Rushcliffe  
Community and  
Voluntary Services)



**Malcolm Cowgill**  
(South Nottinghamshire  
College)



Councillor  
**Mrs Debbie J Mason**  
(Rushcliffe Borough Council)



**David Rollo**  
(Supporting the Local Economy -  
Rushcliffe Business Partnership)

# The Executive Group

The Executive Group is responsible for reporting to the Strategic Board and meets every eight weeks. It includes representatives from the following agencies:

- Rushcliffe Borough Council
- Nottinghamshire County Council
- Nottinghamshire Police
- Nottinghamshire Primary Care Trust
- Principia Partners in Health
- Nottinghamshire Fire and Rescue Authority.
- Rushcliffe Community and Voluntary Service
- Rural Community Action Nottinghamshire
- A representative of the Business Community

## The purpose of the Executive Group is:

- To monitor partnership and Theme Group performance and help them achieve the aims specified by the Strategic Board. They will report performance issues to the Strategic Board.
- To ensure that effective action plans address the priorities of the Sustainable Communities Strategy.
- To provide operational support, guidance and advice to the six Theme Groups.
- To scrutinise Theme Group spend plans before approval by the Strategic Board.
- To develop more integrated working across the Partnership and throughout the Nottinghamshire Partnership.

The Executive Group must make sure the Partnership meets its targets and removes any obstacles or reports them to the Strategic Board. The Group also interprets Strategic Board decisions and gives actions to the Theme Groups.



# Theme Groups

There are six Theme Groups within the Partnership. Their role is to formulate plans and action them to help the Partnership achieve its vision for the Community. Each group includes representatives from relevant agencies,

who meet quarterly and report to the Executive Group. Details about each Theme Group are shown below:



The Rushcliffe Environmental Partnership protects and improves the environment. It helps reduce Rushcliffe's carbon footprint by promoting responsible behaviour and attitudes, protecting and enhancing the built and natural environment

and promoting a sustainable mix of housing. Members of the Group include Rushcliffe Borough Council, Nottinghamshire County Council, Rural Community Action Nottinghamshire, Transition West

Bridgford, Nottinghamshire Wildlife Trust, Pedals, Energy Saving Trust, Campaign to Protect Rural England, REACT 21 and Global Action Plan.



## Rushcliffe Children and Young People's Partnership

The Rushcliffe Children and Young People's Partnership protects the most vulnerable children and young people in the Borough. Its aims are to provide children and young people with more places to go and things to do, improve their health and well-

being and reduce the number of crimes they commit. Membership of the Group includes Rushcliffe Borough Council, Nottinghamshire County Council, Nottinghamshire Health, Connexions, the Voluntary Sector,

Nottinghamshire Police and Sure Start.



## Rushcliffe Health Issues Partnership

The Rushcliffe Health Issues Partnership promotes healthy lifestyles by reducing obesity, raising awareness of alcohol misuse and reducing the number of people who smoke or who are exposed to secondhand smoke. They want to gain a better understanding of the

emotional health and well-being needs of residents and also contribute to the reduction of household domestic violence. Members of the Group include Rushcliffe Borough Council, Nottinghamshire County Council, NHS Nottinghamshire, Parkwood

Leisure, Rushcliffe Community and Voluntary Sector, Nottingham Community Health and Sure Start.



The Rushcliffe Stronger Communities Partnership encourages local people and community organisations to take an active role in shaping their communities. They aim to provide more information, services and

resources that will help elderly and vulnerable people stay independent in their own homes. They will encourage personal growth and community involvement through volunteering. Members of the Group include Rushcliffe Borough Council,

Nottinghamshire County Council, Nottinghamshire Primary Care Trust, Rural Community Action Nottinghamshire, Nottinghamshire and Rushcliffe Community and Voluntary Service.



## Rushcliffe Business Partnership

The Rushcliffe Business Partnership supports business development in Rushcliffe. It encourages businesses in Rushcliffe to network together to generate opportunities with each other and trade with businesses outside Rushcliffe. The Rushcliffe

Business Partnership works with other Theme Groups to raise awareness of the needs of businesses and helps businesses communicate with the public, private and voluntary sectors. The Business Partnership has no staff and is run

by a small steering group made up of business people and officers of organisations who want to support local business. Find further information at

[www.rbpbusiness.org.uk](http://www.rbpbusiness.org.uk)



## South Nottinghamshire Community Safety Partnership

The Community Safety Partnership wants to reduce the number of incidents of domestic burglary, vehicle crime and antisocial behaviour and improve the public's perception of crime. Key partners working alongside Rushcliffe Borough Council and Nottinghamshire County Council

include Nottinghamshire Police, Fire Service and Primary Care Trust, Nottinghamshire Probation Service and Nottinghamshire Drug and Alcohol Action Team. Find further information at [www.sncps.gov.uk](http://www.sncps.gov.uk)

Find out more about the Community Partnership on Rushcliffe Borough Council's website - [www.rushcliffe.gov.uk/communitypartnership](http://www.rushcliffe.gov.uk/communitypartnership)

See **Appendix A** (page 9) for a full structure chart of the Rushcliffe Community Partnership and **Appendix B** (page 10) for the Nottinghamshire Partnership Map.

# Jointly funded posts

A number of partner organisations jointly fund some posts, which support the work of the partnership. These are:

<b>The Health Development Officer</b>	Supports the Health Issues Theme Group.
<b>The Community Outreach Officer</b>	Works for Rushcliffe Community and Voluntary Service and visits older people at home and helps them stay independent in their own homes.
<b>The Activity Friends Co-ordinator</b>	Works for Rushcliffe Community and Voluntary Service and helps to improve the health and well-being of over 50s in the Borough.
<b>The Rural Officer</b>	Works for Rural Community Action Nottinghamshire (RCAN) and supports parish councils and community groups.
<b>The First Contact Co-ordinator</b>	Works for Rushcliffe Community and Voluntary Service and helps people over 60 stay safe and independent in their own homes.
<b>The Community Partnership Co-ordinator</b>	Works for the Partnership and provides support and direction for each of the six Theme Groups to help them achieve their objectives and priorities. They also provide support to the Strategic Board and the Executive Group.
<b>The Housing Choices Advisor</b>	Works for Rushcliffe Community and Voluntary Service and provides housing assistance to older people, including practical assistance, changing existing properties or moving to more suitable accommodation.



# Rushcliffe Sustainable Community Strategy

This key document sets out how the Community Partnership would like the Borough to be in the future and how it will work towards achieving its vision:

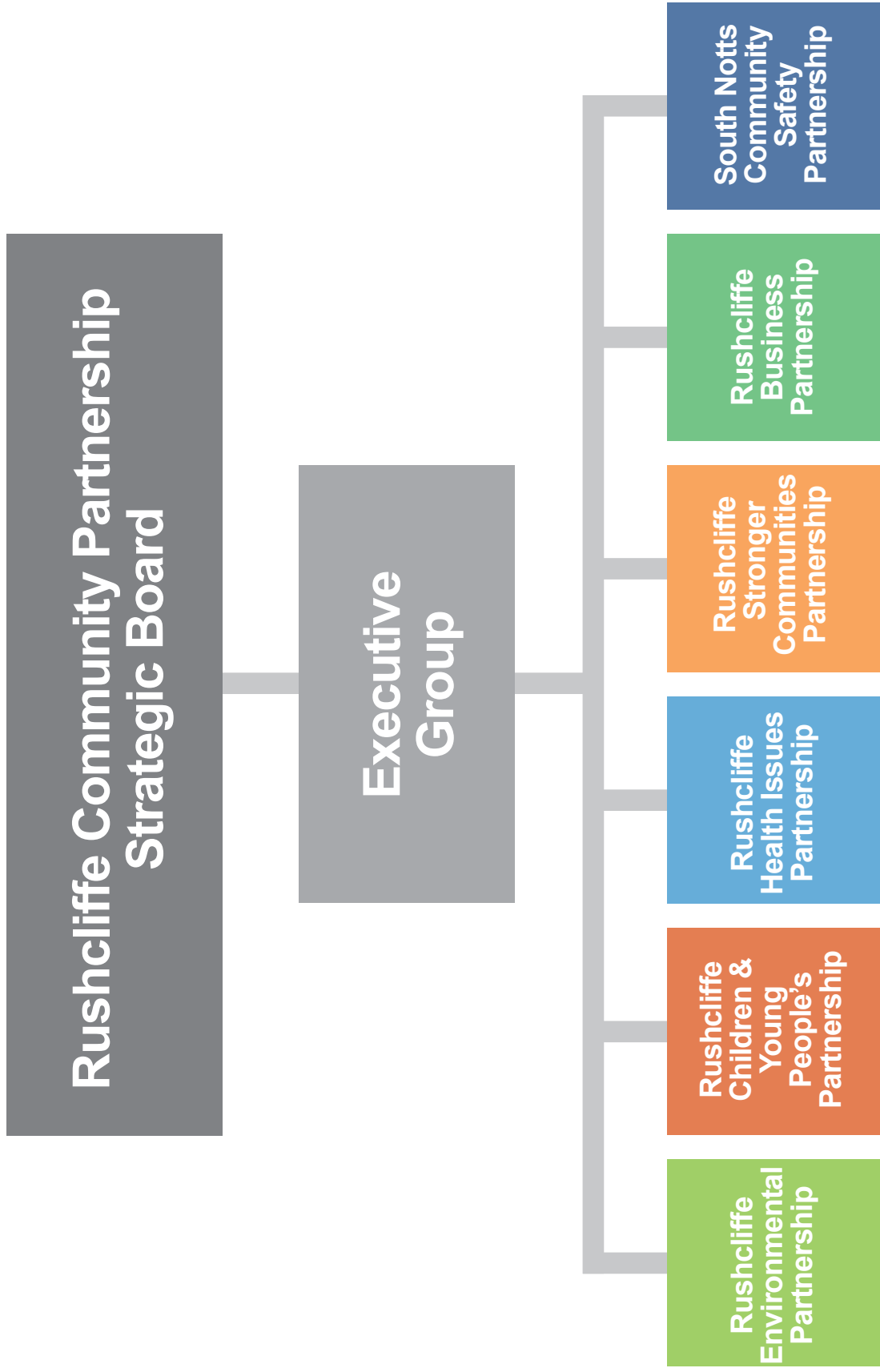
**Rushcliffe will be an excellent place to live, work and visit for everyone.**

By listening to the views of Rushcliffe residents, the Partnership formed a better understanding of the changing needs of the Borough and were able to publish this strategy.

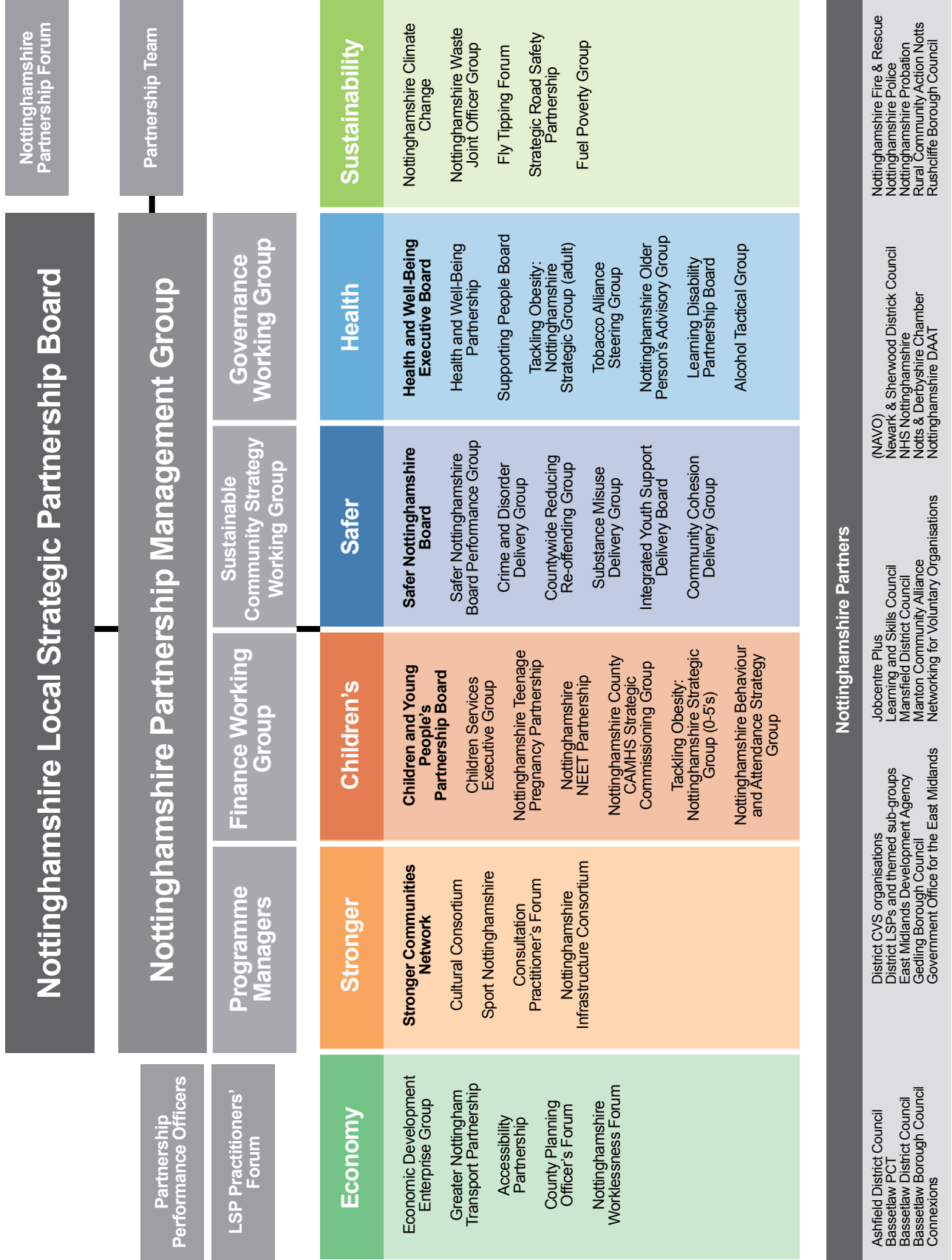
The long term vision covers 2009 – 2026, however three-year action plans have been developed for each Theme (see 'Theme Groups' above) and these are refreshed each year. The action plans set targets for each Group and the actions and tasks show how the targets will be achieved. Further details can be found in the full Community Strategy Document:  
[www.rushcliffe.gov.uk/upload/public/attachments/273/commstrategyweb.pdf](http://www.rushcliffe.gov.uk/upload/public/attachments/273/commstrategyweb.pdf)



# APPENDIX A



# APPENDIX B Nottinghamshire Partnership Map (as of 2.07.09)



Nottinghamshire Partnership Forum

Partnership Team

## Nottinghamshire Local Strategic Partnership Board

## Nottinghamshire Partnership Management Group

Partnership Performance Officers

LSP Practitioners' Forum

Programme Managers

Finance Working Group

Sustainable Community Strategy Working Group

Governance Working Group

### Economy

Economic Development Enterprise Group  
Greater Nottingham Transport Partnership  
Accessibility Partnership  
County Planning Officer's Forum  
Nottinghamshire Worklessness Forum

### Stronger

**Stronger Communities Network**  
Cultural Consortium  
Sport Nottinghamshire  
Consultation Practitioner's Forum  
Nottinghamshire Infrastructure Consortium

### Children's

**Children and Young People's Partnership Board**  
Children Services Executive Group  
Nottinghamshire Teenage Pregnancy Partnership  
Nottinghamshire NEET Partnership  
Nottinghamshire County CAMHS Strategic Commissioning Group  
Tackling Obesity: Nottinghamshire Strategic Group (0-5's)  
Nottinghamshire Behaviour and Attendance Strategy Group

### Safer

**Safer Nottinghamshire Board**  
Safer Nottinghamshire Board Performance Group  
Crime and Disorder Delivery Group  
Countywide Reducing Re-offending Group  
Substance Misuse Delivery Group  
Integrated Youth Support Delivery Board  
Community Cohesion Delivery Group

### Health

**Health and Well-Being Executive Board**  
Health and Well-Being Partnership  
Supporting People Board  
Tackling Obesity: Nottinghamshire Strategic Group (adult)  
Tobacco Alliance Steering Group  
Nottinghamshire Older Person's Advisory Group  
Learning Disability Partnership Board  
Alcohol Tactical Group

### Sustainability

Nottinghamshire Climate Change  
Nottinghamshire Waste Joint Officer Group  
Fly Tipping Forum  
Strategic Road Safety Partnership  
Fuel Poverty Group

## Nottinghamshire Partners

Ashfield District Council  
Bassettlaw PCT  
Bassettlaw District Council  
Bassettlaw Borough Council  
Connexions  
District CVS organisations  
District LSPs and themed sub-groups  
East Midlands Development Agency  
Gedling Borough Council  
Government Office for the East Midlands  
Jobcentre Plus  
Learning and Skills Council  
Mansfield District Council  
Manton Community Alliance  
Networking for Voluntary Organisations  
(NAVO)  
Newark & Sherwood District Council  
NHS Nottinghamshire  
Nottinghamshire Chamber  
Nottinghamshire DAAT  
Nottinghamshire Fire & Rescue  
Nottinghamshire Police  
Nottinghamshire Probation  
Rural Community Action Notts  
Rushcliffe Borough Council

Rushcliffe Borough Council  
Civic Centre  
Pavilion Road  
West Bridgford  
Nottingham  
NG2 5FE

**T** 0115 981 9911  
**F** 0115 945 5882  
**E** [customerservices@rushcliffe.gov.uk](mailto:customerservices@rushcliffe.gov.uk)  
**W** [www.rushcliffe.gov.uk](http://www.rushcliffe.gov.uk)